

## A. Enable Toolbox Browser.

- Step 1. If necessary, open your ASSEMBLY file.
- Step 2. Click Tools Menu > Add-Ins.
- Step 3. Check **SolidWorks Toolbox Browser** to place a check in the check box, then click OK, **Fig. 1**.

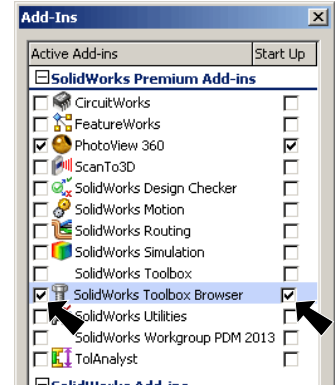







Fig. 1

## B. Design Library.

- Step 1. Click the **Design Library** tab  in the Task Pane, **Fig. 2**.
- Step 2. Expand the **Toolbox**  **Toolbox**  
Expand **ANSI Inch** folder  **ANSI Inch**  
Expand **Bolts and Screws** folder  **Bolts and Screws**  
Click **Machine Screws** folder  **Machine Screws**

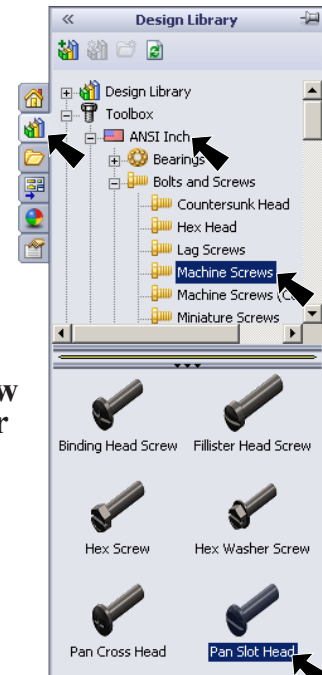





Fig. 2

- Step 3. In the lower pane, click the **Pan Slot Head** screw, **Fig. 2**. Drag screw towards a hole in a sheet metal part. Move the tip of your cursor to the edge of a hole, **Fig. 3**. When the screw snaps into place and the pointer (cursor) changes to  concentric and coincident mate, release the screw.

- Step 4. In the Property Manager set:  
**Size #4-40**  
**Length .375, Fig. 4**  
click OK 

Release screw when cursor changes to 

- Step 5. Continue and place screw in each sheet metal hole.  
Click **Cancel**  when done.

- Step 6. Save. Use **Ctrl-S**.

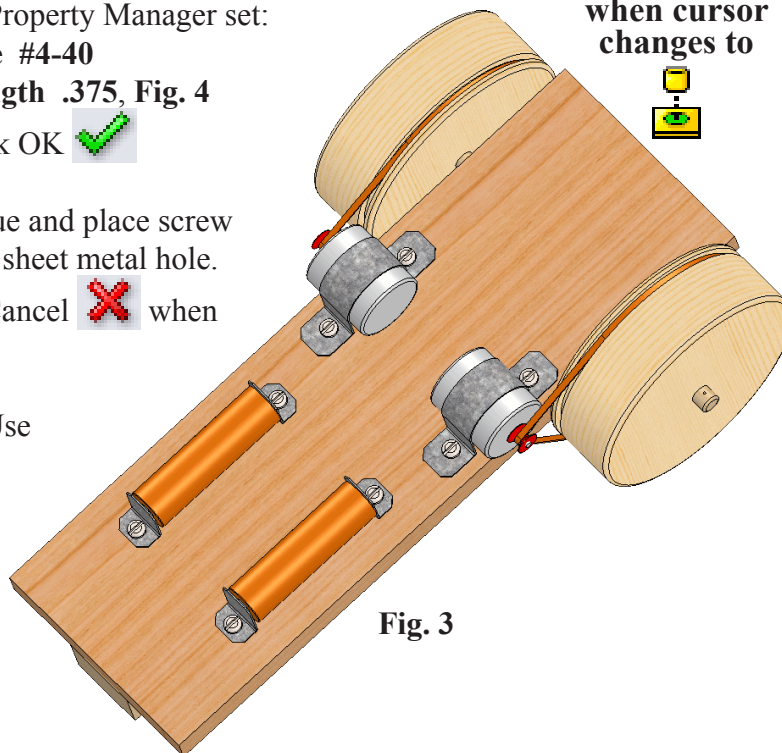


Fig. 3

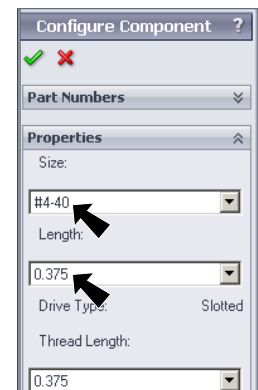


Fig. 4