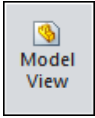


A. Insert Views.

Step 1. Click File Menu > New, click **Drawing Metric** and OK.


Step 2. Click **View Layout**  on the Command Manager toolbar.

Step 3. Click **Model View**  on the View Layout toolbar.

Step 4. Click **Browse** in the Property Manager.

Step 5. Select your **F1 CAR ASSEMBLY** file and click Open.

Step 6. In the Property Manager under Orientation, **Fig. 1**

- click **Right** 
- check **Preview**
- under Scale
- select **Use custom scale**
- Scale **1:1**

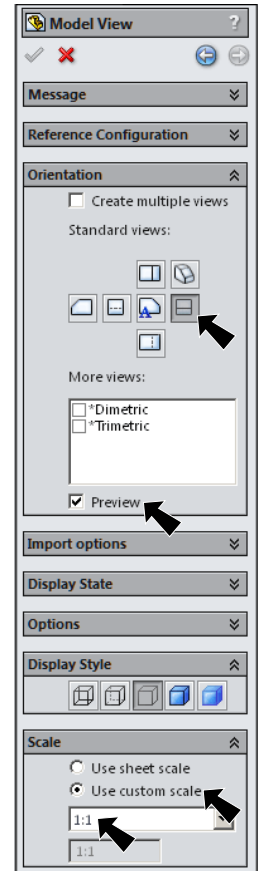


Fig. 1

Step 7. Move cursor into the graphic area. Align left edge of the preview with left border line and align bottom of preview with top of title block. Click to place right side view, **Fig. 2**.

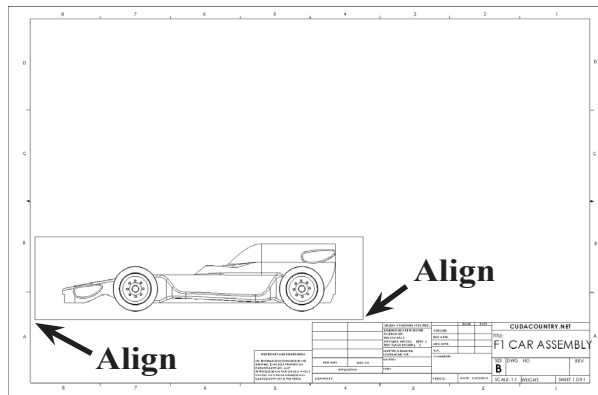


Fig. 2

Step 8. **Move cursor straight up**. Center preview between the side view you just placed and top border line. Click to place the top view as shown in **Fig. 3**.

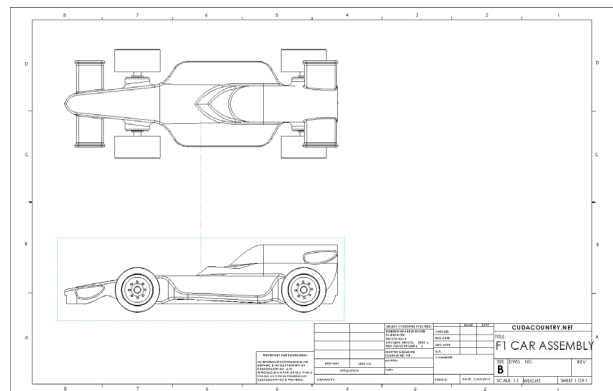


Fig. 3

C. Add Dimensions.

Step 1. Use the **Zoom to Area**  in the View toolbar to drag a zoom window around the **side view**, Fig. 7.

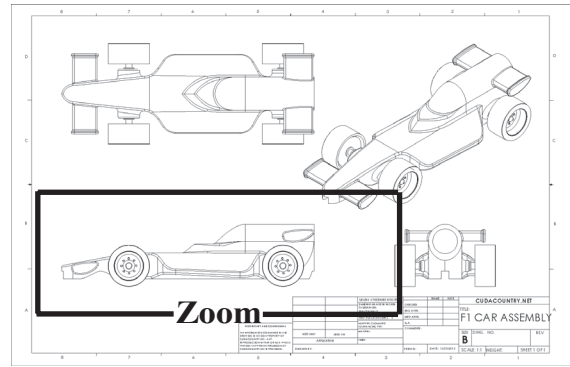



Fig. 7

Step 2. Click **Sketch**  on the Command Manager toolbar.

Step 3. Click **Smart Dimension**  (S) on the Sketch toolbar.

Step 4. Add the dimensions to the side view as shown in **Fig. 8**. To Smart dimension click the line then move the cursor out away from the line and click. Arrange the dimensions as **Fig. 8**. **You can only place dimensions here- you can not change dimensions.**

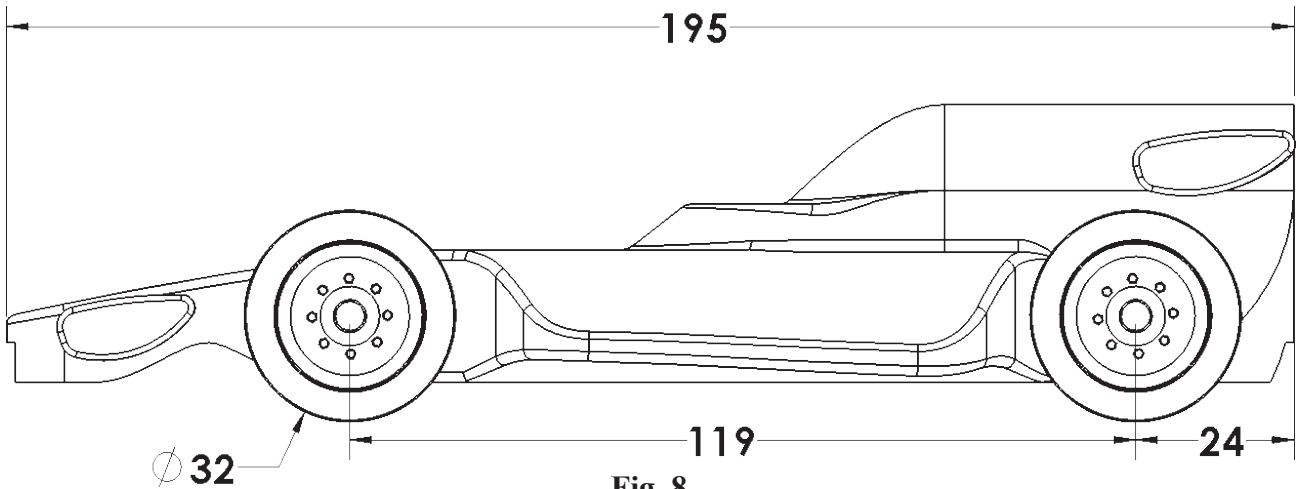



Fig. 8

Step 5. Use **F** key on keyboard to **fit** drawing. Use the **Zoom to Area**  in the View toolbar to drag a zoom window around the **back view**. Escape to unselect Zoom to Area.

Step 6. Add the dimensions to the **back view**, Fig. 9.

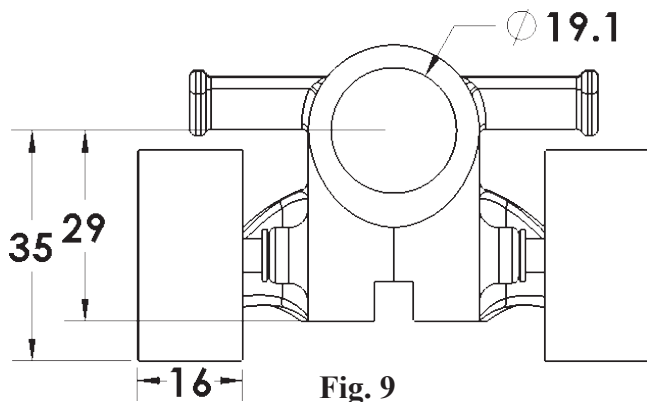


Fig. 9

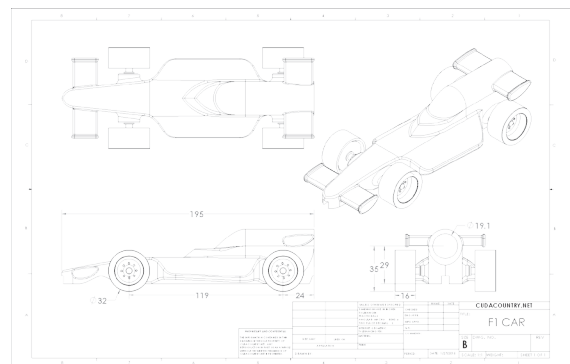



Fig. 10

D. Add Your Name and Period to Title Block.

Step 1. Use **F** key on keyboard to **fit** drawing.

Use the **Zoom to Area**  in the View toolbar to drag a zoom window around the **DRAWN BY** and **PERIOD** in the title block, **Fig. 11**.

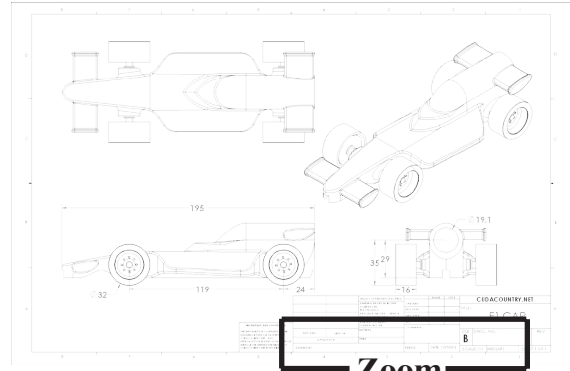
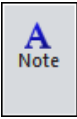


Fig. 11 Zoom

Step 2. Click **Note**  on the Annotation toolbar.

Step 3. Click just to the right of **DRAWN BY**;, **Fig. 12**.

Step 4. Lock the Caps and key-in **your first and last names**, **Fig. 12**.

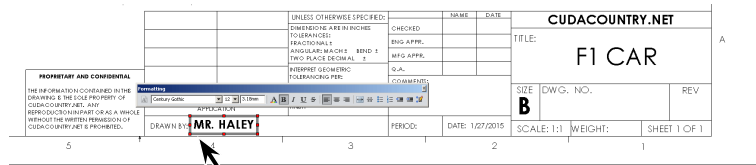


Fig. 12

Step 5. Click **OK**  in the Property Manager.

Step 6. Click **Note**  on the Annotation toolbar.

Step 7. Click just to the right of **PERIOD**;, click and key-in **your Period number**, **Fig. 13**.

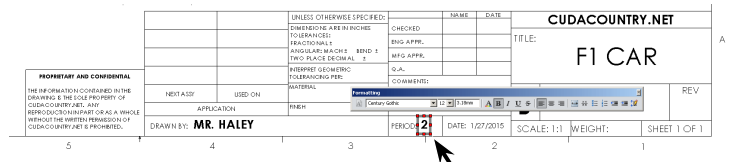


Fig. 13

Step 8. Click **OK**  in the Property Manager.

Step 9. Save. Use **Ctrl-S**.