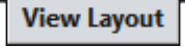
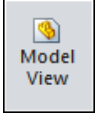


### A. Insert Right View.

Step 1. Click File Menu > New, click **Drawing** and OK.

Step 2. Click **View Layout**  on the Command Manager toolbar.

Step 3. Click **Model View**  on the View Layout toolbar.

Step 4. Click **Browse** in the Property Manager.

Step 5. Select your **P-51 ASSEMBLY** file and click Open.

Step 6. In the Property Manager:  
under Orientation, **Fig. 1**

click **Right** 

check **Preview**

under Scale

select **Use custom scale**

Scale **1:1**

Step 7. Move the cursor into the graphic area and click to place the right side view as shown in **Fig. 2**. **Align the right edge** of the preview with the right border line and **align wheel next to title block** with the top of the title block.

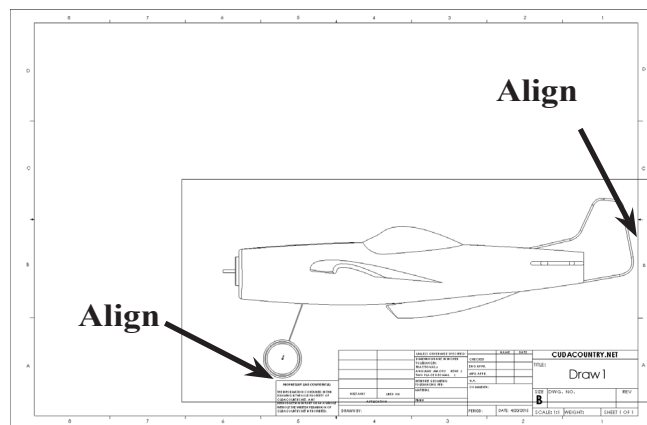


Fig. 2

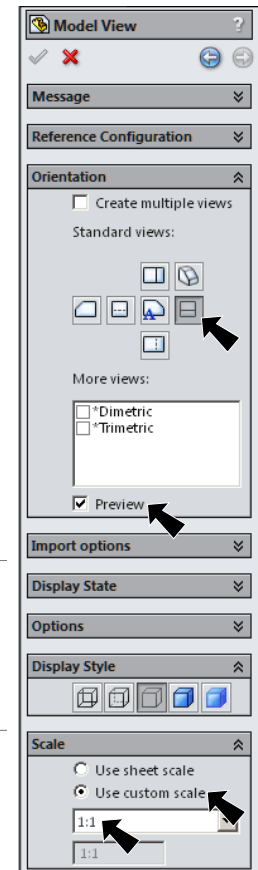


Fig. 1

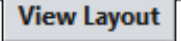
Step 8. Click OK  in the Property Manager.

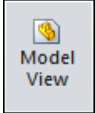
### B. Save as "P-51".

Step 1. Click File Menu > Save As.

Step 2. Key-in **P-51** for the filename and press ENTER.


## C. Insert Top View.

Step 1. Click **View Layout**  on the Command Manager toolbar.

Step 2. Click **Model View**  on the View Layout toolbar.

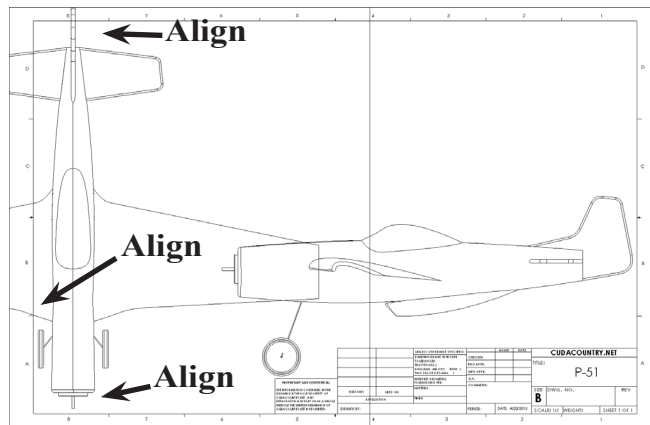
Step 3. In the Property Manager:

click **Next**   
under **Orientation**, **Fig. 3**

click **Top**   
check **Preview**  
under **Scale**

select **Use custom scale**  
**Scale 1:1**

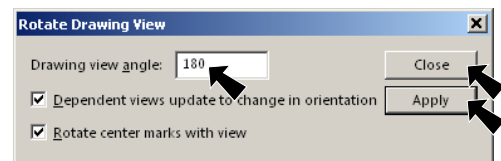
Step 4. Move the cursor into the graphic area. Align the wheel preview with the left border line and center fuselage between the top and bottom border lines, **Fig. 4**.



**Fig. 4**

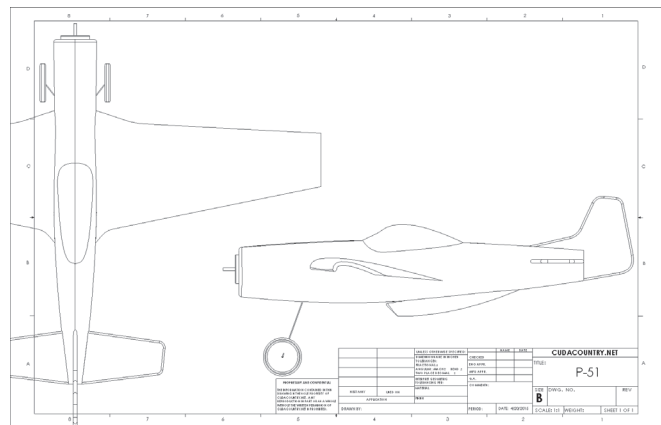
Step 5. Click **Rotate View**  on the View toolbar.

Step 6. In the Rotate Drawing View dialog box:  
set Drawing view angle **180**, **Fig. 5**  
and click **Apply** and **Close**.

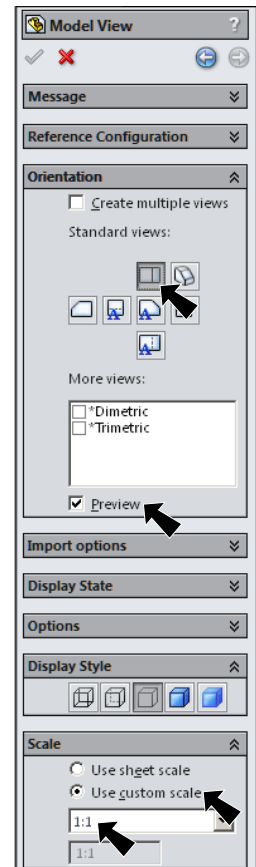


**Fig. 5**

Step 7. Click **OK**  in the Property Manager.



**Fig. 6**



**Fig. 3**

## D. Hide Wing and H Stab.

Step 1. **Right click** Wing that is outside drawing, click **Show/Hide > Hide Component** from menu, **Fig. 7**.

Step 2. **Right click** H Stab that is outside drawing, **Show/Hide > Hide Component** from menu, **Fig. 8**.

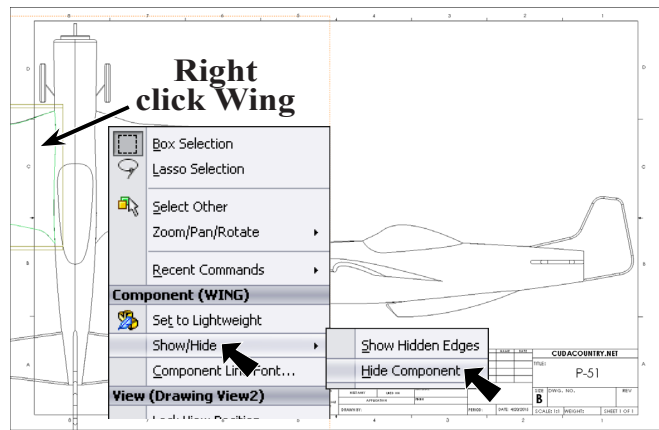


Fig. 7

## E. Insert Isometric View.

Step 1. Click **View Layout** **View Layout** on the Command Manager toolbar.

Step 2. Click **Model View**  on the View Layout toolbar.

Step 3. In the Property Manager:

click **Next**  under Orientation, **Fig. 9**

click **Isometric**  check **Preview** under Scale

select **Use custom scale**  
**Scale 2:3**

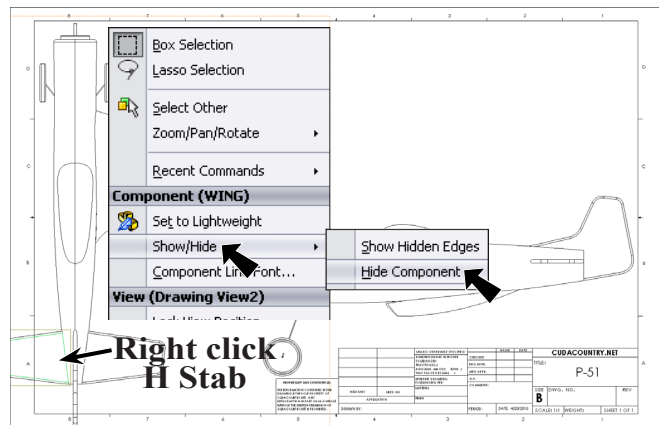



Fig. 8

Step 4. Move the cursor into the graphic area and click to place the isometric view in space about right view, **Fig. 10**.

Step 5. Click **OK**  in the Property Manager.

Step 6. Save.  
Use **Ctrl-S**.

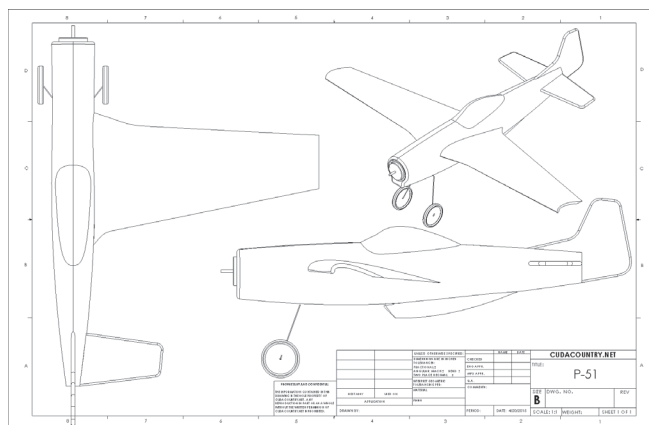


Fig. 10

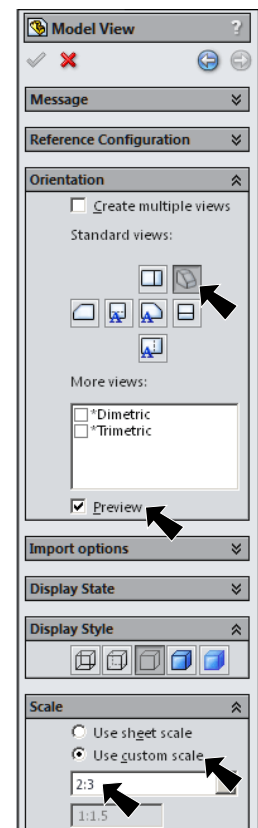
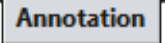
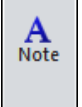


Fig. 9

## F. Add Leaders and Notes to Stabilizers.

Step 1. Click **Annotation**  on the Command Manager toolbar.

Step 2. Click **Note**  on the Annotation toolbar.

Step 3. In the Note Property Manger:  
under Leader, **Fig. 11**

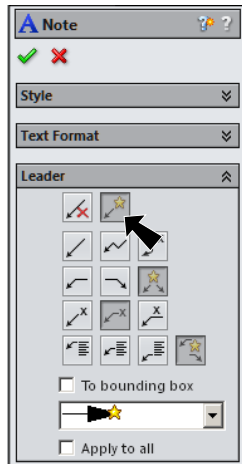
click **Auto Leader** 

in top view, click the  
Leading Edge of the **H Stab**  
and bring the text box **inside**  
H Stab and click

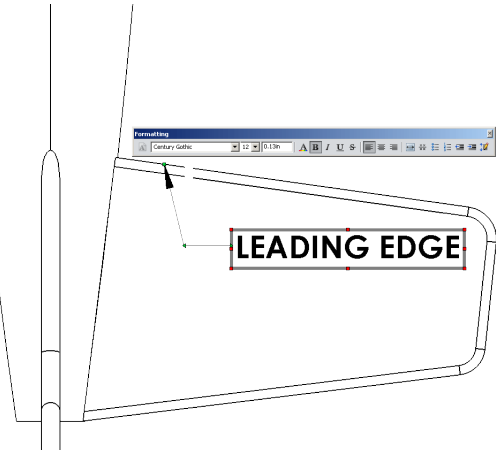
lock the Caps and key-in:

**LEADING EDGE,**  
**Fig. 12**

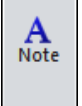
click OK .



**Fig. 11**



**Fig. 12**

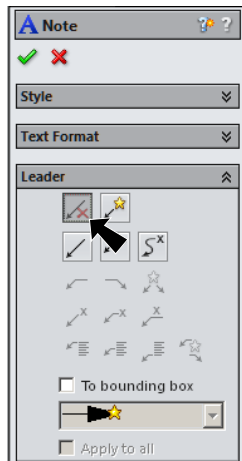
Step 4. Click **Note**  on the Annotation toolbar.

Step 5. In the Note Property Manger:  
under Leader, **Fig. 13**

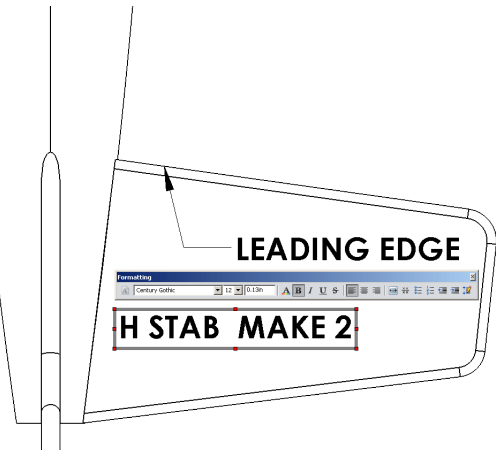
click **NO Leader**   
(red X)

click **inside** H Stab and  
key-in **H STAB MAKE 2,**  
**Fig. 14**

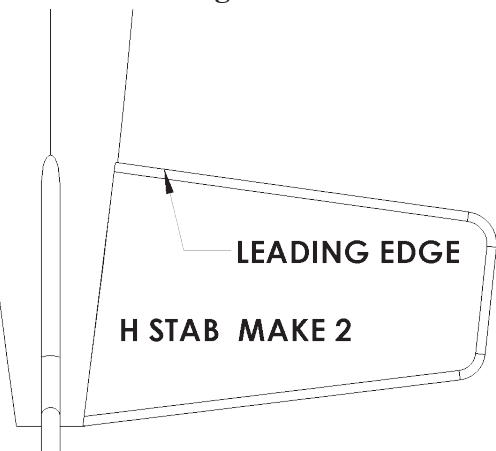
click OK .



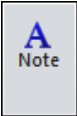
**Fig. 13**



**Fig. 14**



**Fig. 15**

Step 6. Click **Note**  on the Annotation toolbar.

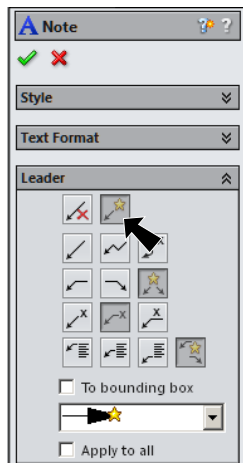
Step 7. In the Note Property Manger, under Leader, **Fig. 16**

click **Auto Leader** 

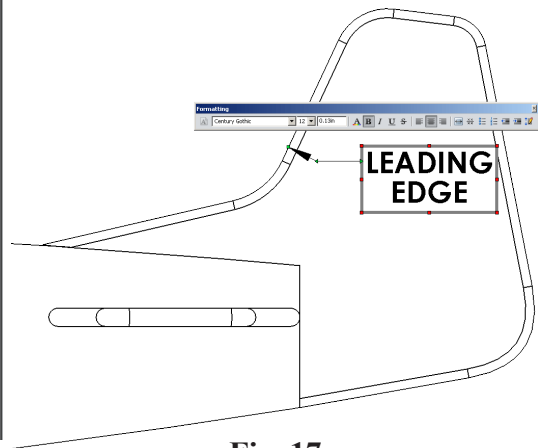
click the leading edge of the **V Stab** and bring the text box **inside** V Stab and click

lock the Caps and key-in **LEADING EDGE**, **Fig. 17**

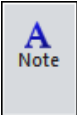
click OK .



**Fig. 16**



**Fig. 17**

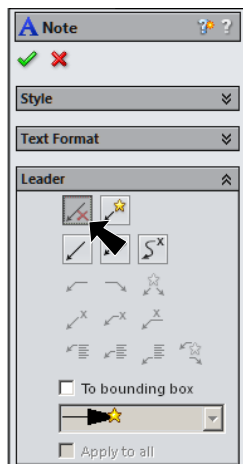
Step 8. Click **Note**  on the Annotation toolbar.

Step 9. In the Note Property Manger: under Leader, **Fig. 18**

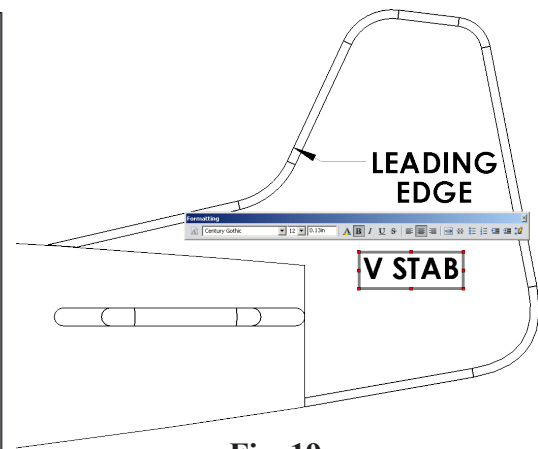
click **NO Leader**  (red X)

click **inside** V Stab and key-in **V STAB**, **Fig. 19**

click OK .

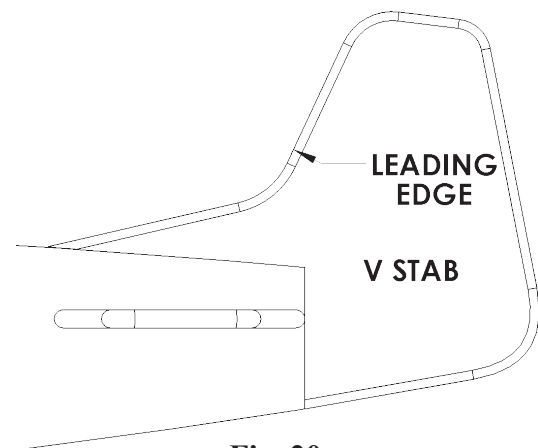


**Fig. 18**




**Fig. 19**

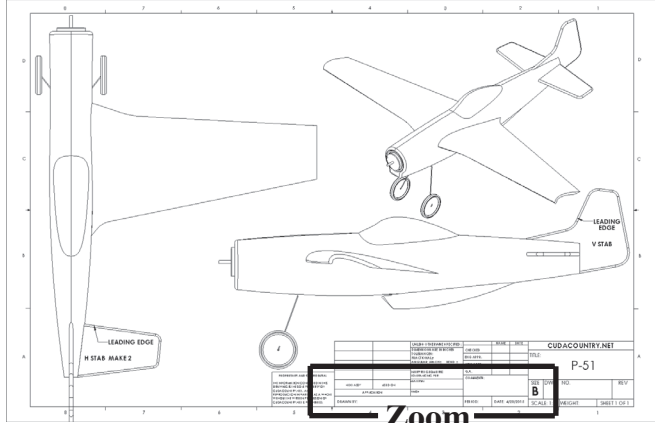
Step 10. Save. Use **Ctrl-S**.



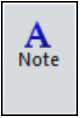
**Fig. 20**

## G. Add Your Name and Period to Title Block.

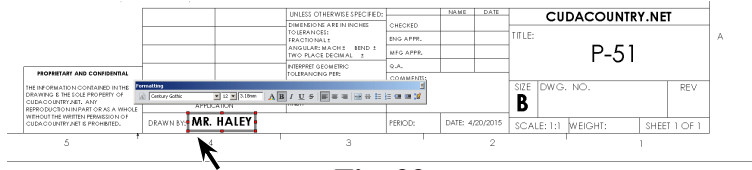
Step 1. Use the **Zoom to Area**  in the View toolbar to drag a zoom window around the **DRAWN BY** and **PERIOD** in the title block, **Fig. 21**.



**Fig. 21**

Step 2. Click **Note**  on the Annotation toolbar.

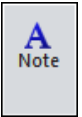
Step 3. Click just to the right of **DRAWN BY**., **Fig. 22**.



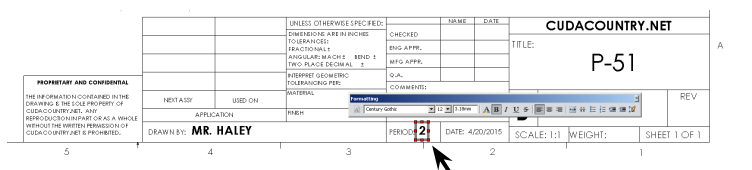
**Fig. 22**

Step 4. Lock the Caps and key-in **your first and last names**, **Fig. 22**.

Step 5. Click **OK**  in the Property Manager.

Step 6. Click **Note**  on the Annotation toolbar.

Step 7. Click just to the right of **PERIOD**: and key-in **your Period number**, **Fig. 23**.



**Fig. 23**

Step 8. Click **OK**  in the Property Manager.

Step 9. Save. Use **Ctrl-S**.