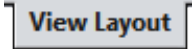


Rocket Sheet Metal Drawing

A. Insert Front View.

Step 1. Click File Menu > New, click **Drawing** and OK.


Step 2. Click **View Layout**  on the Command Manager toolbar.

Step 3. Click **Model View**  on the View Layout toolbar.

Step 4. Click **Browse** in the Property Manager.

Step 5. Select your **ROCKET SHEET METAL ASSEMBLY** file and click Open.

Step 6. In the Property Manager under Orientation, **Fig. 1**

click **Front** 
check **Preview**
under Scale
select **Use custom scale**
Scale **1:1**

Step 7. Move the cursor into the graphic area. Align the bottom of the preview with the bottom of the title block. Click to place the Front view, **Fig. 2**.

Step 8. Click OK  in the Property Manager.

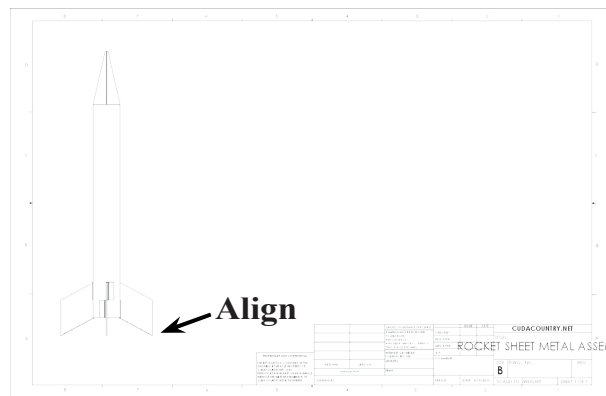


Fig. 2

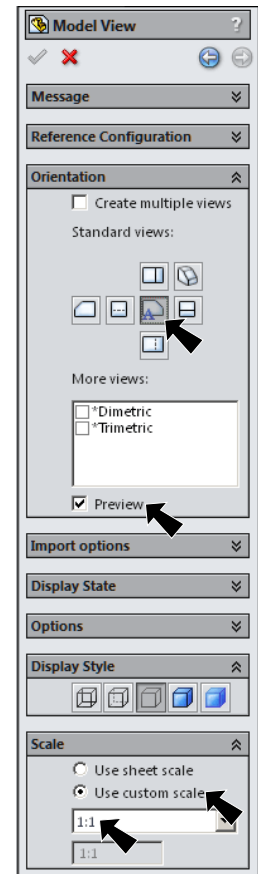
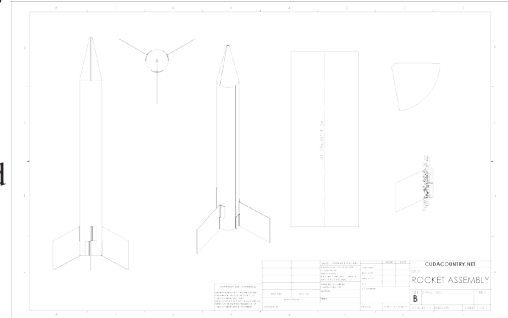


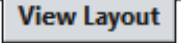
Fig. 1

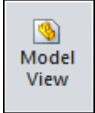
B. Save as "ROCKET ASSEMBLY".



Step 1. Click File Menu > Save As.

Step 2. Key-in **ROCKET ASSEMBLY** for the filename and press ENTER.

C. Insert Top View.

Step 1. Click **View Layout**  on the Command Manager toolbar.

Step 2. Click **Model View**  on the View Layout toolbar.

Step 3. In the Property Manager set:
click **Next**  at top, **Fig. 3**
under Orientation
click **Top** .
under Scale
select **Use sheet scale 1:1**

Step 4. Move the cursor into the graphic area and click to place the Top view, **Fig. 4**.

Step 5. Click **OK**  in the Property Manager.

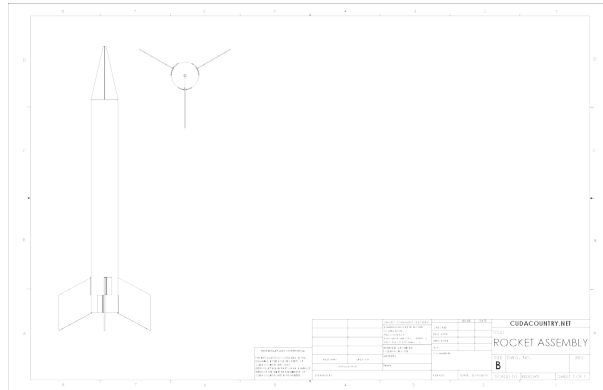


Fig. 4

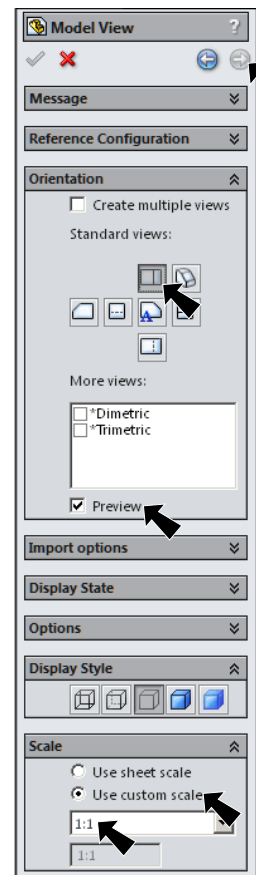
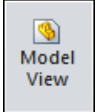



Fig. 3

D. Insert Trimetric View.

Step 1. Click **Model View**  on the View Layout toolbar.

Step 2. In the Property Manager set:
click **Next**  , **Fig. 5**
under More views
check **Trimetric**
under Scale
select **Use sheet scale 1:1**

Step 3. Move the cursor into the graphic area and click to place the Trimetric view, **Fig. 6**.

Step 4. Click **OK**  in the Property Manager.

Step 5. Save. Use **Ctrl-S**.

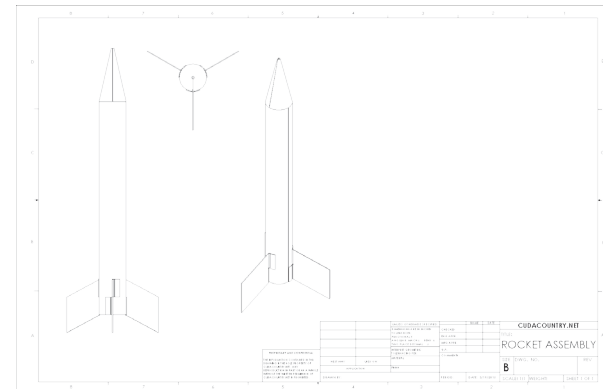


Fig. 6

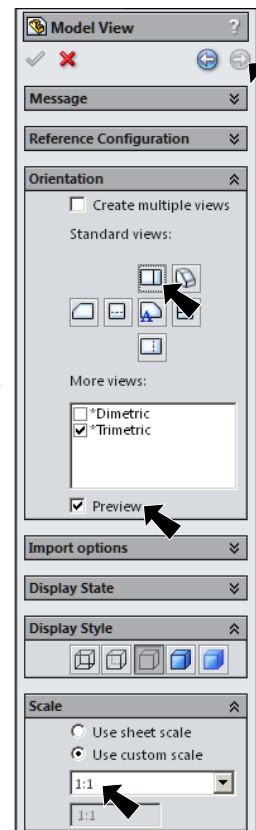
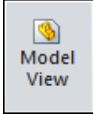


Fig. 5

E. Insert Body Tube Flatten.

Step 1. Click **Model View**  on the View Layout toolbar.

Step 2. Click **Browse** in the Property Manager.

Step 3. Select your **BODY TUBE** file and click Open.

Step 4. In the Property Manager set:
under More views, **Fig. 7**
check **Flat pattern**
under Scale
select **Use sheet scale 1:1**

Step 5. Move the cursor into the graphic area and click to place Body Tube flat pattern view as shown in **Fig. 8**.

Step 6. Click OK  in the Property Manager.

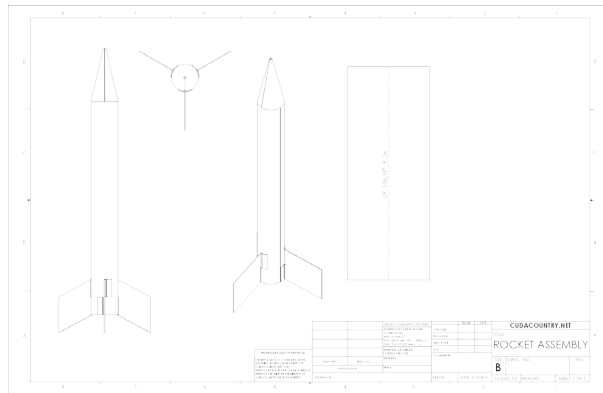


Fig. 8

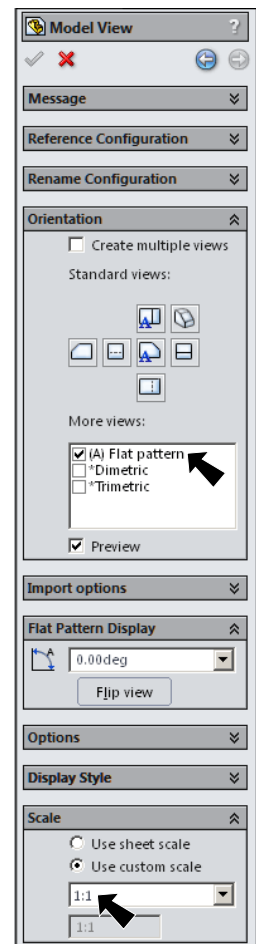
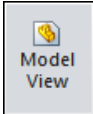


Fig. 7

F. Insert Nose Cone Flatten.

Step 1. Click **Model View**  on the View Layout toolbar.

Step 2. Click **Browse** in the Property Manager.

Step 3. Select your **NOSE CONE** file and click Open.

Step 4. In the Property Manager set:
under More views, **Fig. 7**
check **Flat pattern**
under Scale
select **Use sheet scale 1:1**

Step 5. Move the cursor into the graphic area and click to place Nose Cone flat pattern view as shown in **Fig. 9**.

Step 6. Click OK  in the Property Manager.

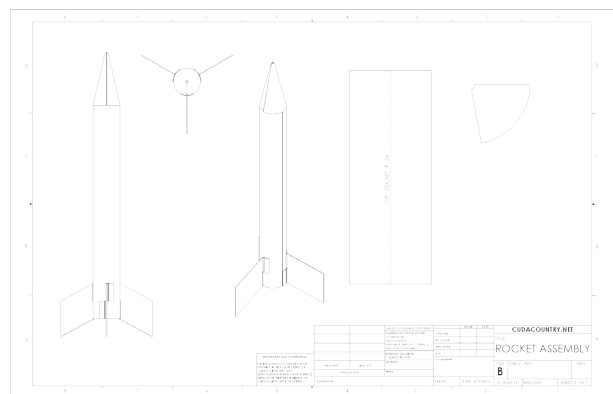
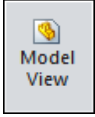


Fig. 9

G. Insert Fin Flatten View.

Step 1. Click **Model View**  on the View Layout toolbar.

Step 2. Click **Browse** in the Property Manager.

Step 3. Select your **FIN** file and click Open.

Step 4. In the Property Manager set:
under More views, **Fig. 10**
check **Flat pattern**
under Scale
select **Use sheet scale 1:1**

Step 5. Move the cursor into the graphic area and click to place the Fin flat pattern view as shown in **Fig. 11**.

Step 6. Click OK  in the Property Manager.

Step 7. Save. Use **Ctrl-S**.

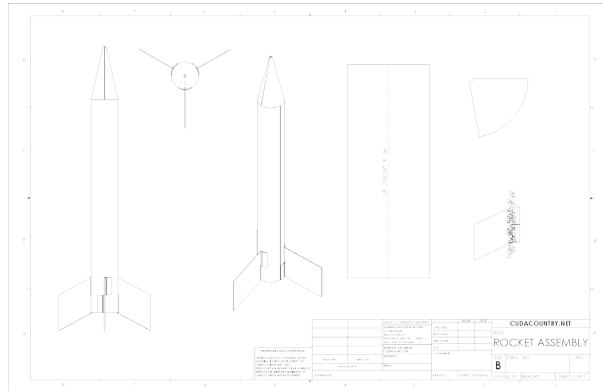


Fig. 11

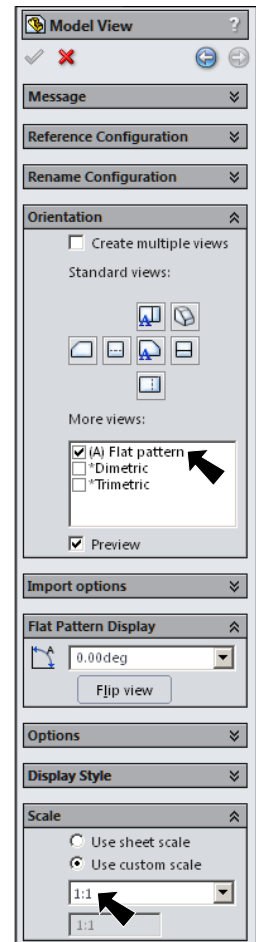



Fig. 10

H. Add Your Name and Period to Title Block.

Step 1. Use the **Zoom to Area**  in the View toolbar to drag a zoom window around the **DRAWN BY** and **PERIOD** in the title block, **Fig. 12**.

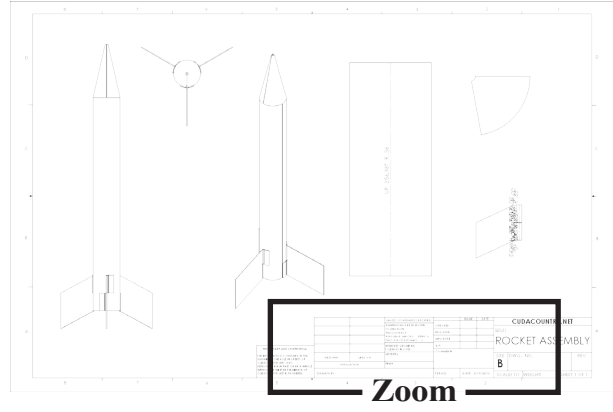
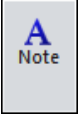


Fig. 12

Step 2. Click **Note**  on the Annotation toolbar.

Step 3. Click just to the right of **DRAWN BY**;, **Fig. 14**.

Step 4. Lock the Caps and key-in **your first and last names**, **Fig. 13**.

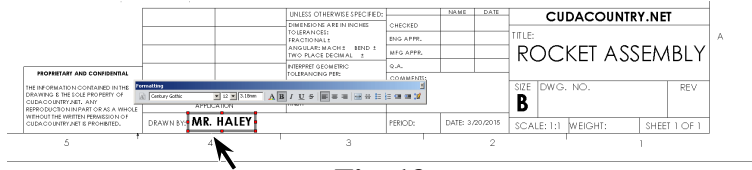

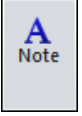


Fig. 13

Step 5. Click **OK**  in the Property Manager.

Step 6. Click **Note**  on the Annotation toolbar.

Step 7. Click just to the right of **PERIOD**;, click and key-in **your Period number**, **Fig. 14**.

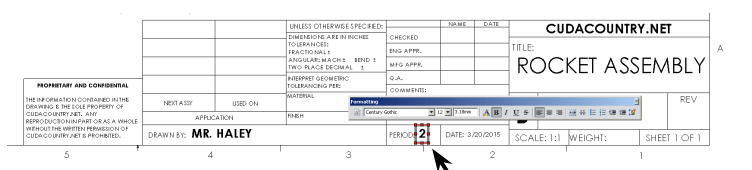



Fig. 14

Step 8. Click **OK**  in the Property Manager.

Step 9. Save. Use **Ctrl-S**.