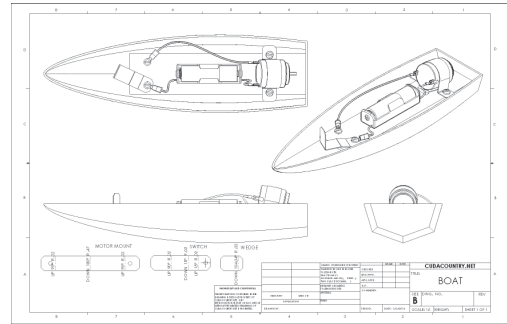



Boat Drawing

A. Insert Views.

Step 1. Click File Menu > New, click **Drawing** and OK.

Step 2. Click **View Layout**  on the Command Manager toolbar.



Step 3. Click **Model View**  on the View Layout toolbar.

Step 4. Click **Browse** in the Property Manager.

Step 5. Select your **BOAT ASSEMBLY** file and click Open.

Step 6. In the Property Manager under **Orientation**:
under Orientation, **Fig. 1**

click **Right** 

check **Preview**

under Scale

select **Use custom scale**

Scale **1:1**

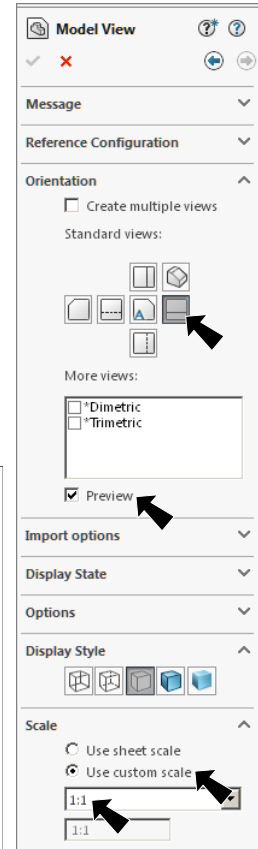


Fig. 1

Step 7. Move the cursor into the graphic area. Align the left edge of the hull with the left border line and align the bottom of the preview with the top of the title block. Click to place the right side view, **Fig. 2**.

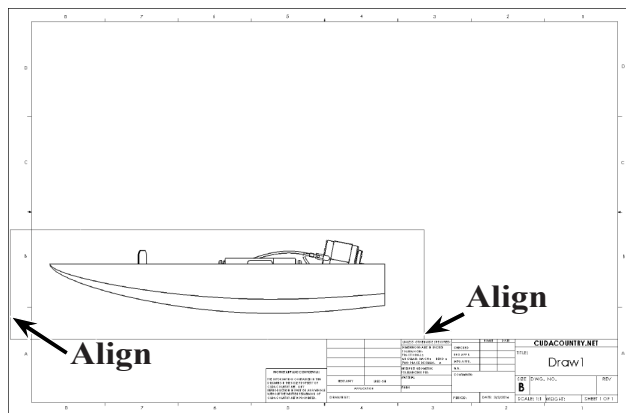


Fig. 2

Step 8. **Move cursor straight up.** Center preview between the side view you just placed and top border line. Click to place the top view, **Fig. 3**.

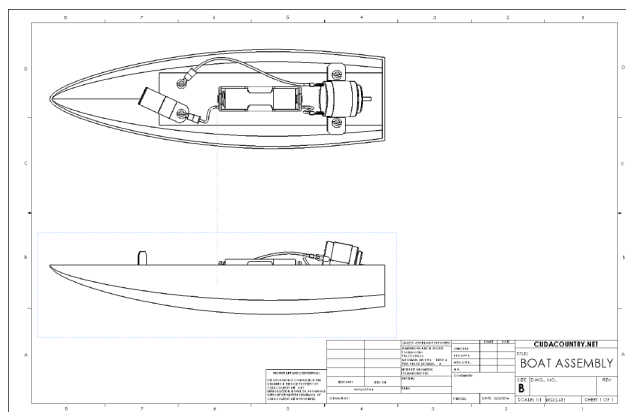


Fig. 3

Step 9. Move the cursor to the right of the side view. Center the preview between the side view and right border line. Click to place the back view, **Fig. 4**.

Step 10. Move the cursor to the top left corner of the drawing and click to place the Isometric view, **Fig. 5**.

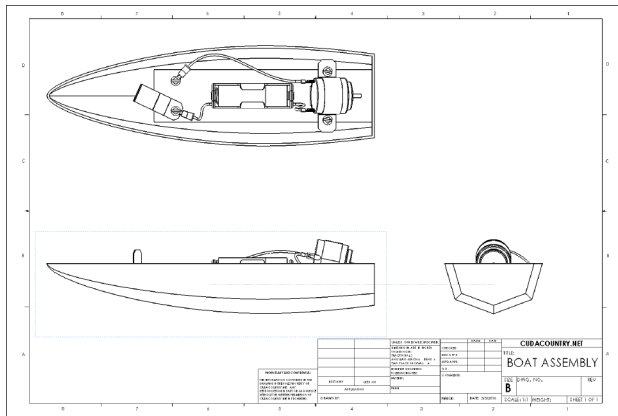


Fig. 4

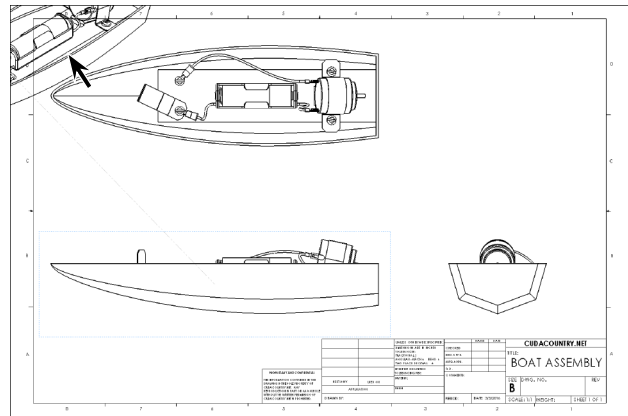


Fig. 5

Step 11. Click OK  in the Property Manager.

Step 12. Grab any geometry of the Isometric view and move view to top right corner of drawing, **Fig. 6**.

B. Save as "BOAT".

Step 1. Click File Menu > Save As.

Step 2. Key-in **BOAT** for the filename and press ENTER.

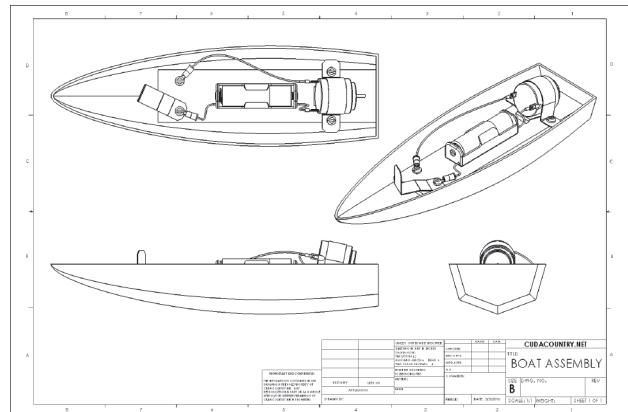



Fig. 6

C. Insert Motor Mount Flatten View.

Step 1. Use the **Zoom to Area**  in the View toolbar to drag a zoom window around area to left of title block, **Fig. 7**.

Step 2. Click **Model View**  on the Drawings toolbar.

Step 3. Click **Browse** in the Property Manager.

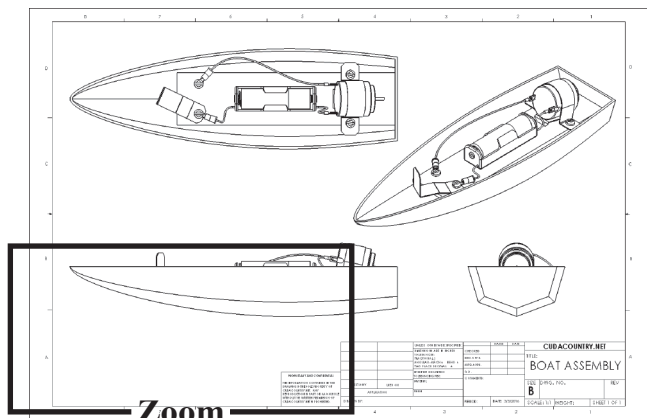


Fig. 7

Step 4. Select your **MOTOR MOUNT** file and click Open.

Step 5. In the Model View Property Manager set:
under Orientation More Views, **Fig. 8**
check **Flat pattern**
check **Preview**
under Scale
select **Use custom scale**
Scale **1:1**

Step 6. Move the cursor into the graphic area and click to place the Motor Mount flat pattern view, **Fig. 9**.

Step 7. Click OK  in the Property Manager.

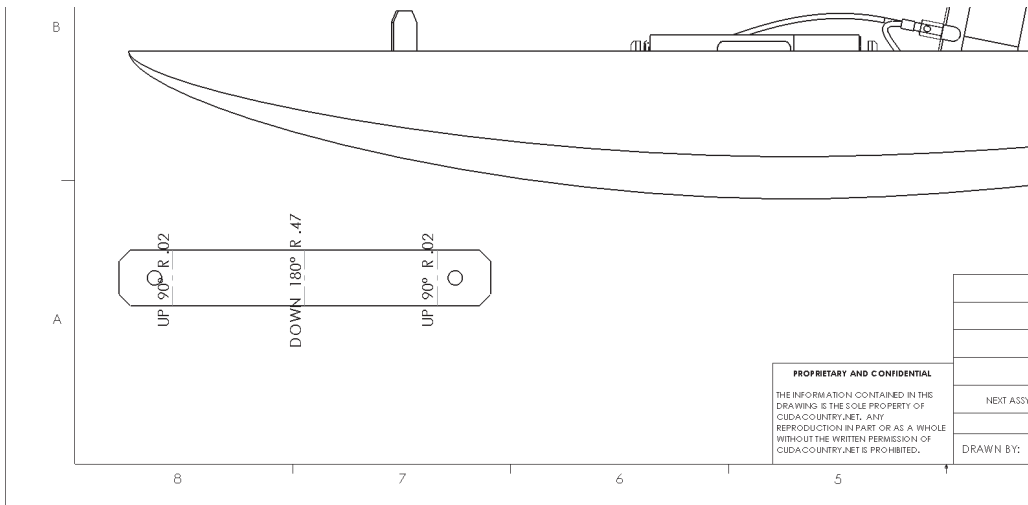


Fig. 9

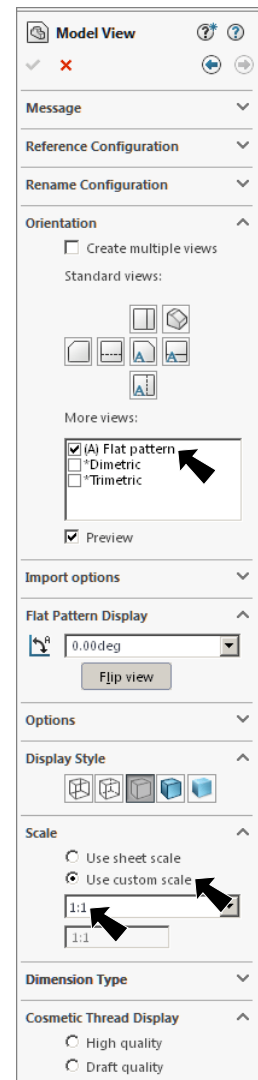
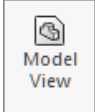


Fig. 8

D. Insert Switch Flatten View.

Step 1. Click **Model View**  on the Drawings toolbar.

Step 2. Click **Browse** in the Property Manager.

Step 3. Select your **SWITCH** file and click Open.

Step 5. In the Model View Property Manager set:
 under Orientation More Views, **Fig. 10**
 check **Flat pattern**
 check **Preview**
 under Scale
 select **Use custom scale**
Scale 1:1

Step 5. Move the cursor into the graphic area and click to place the Switch flat pattern view, **Fig. 11**.

Step 6. Click OK  in the Property Manager.

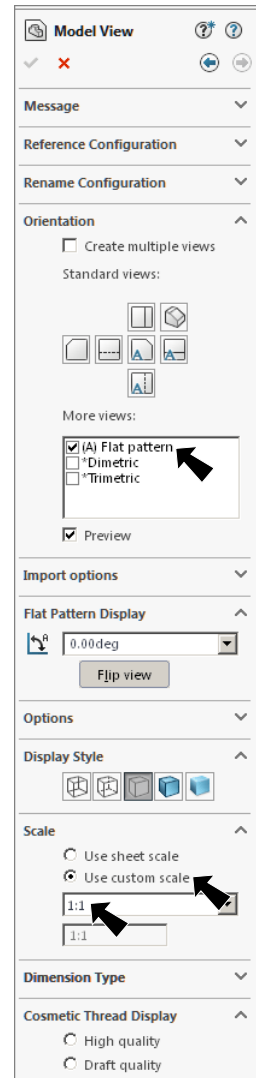


Fig. 10

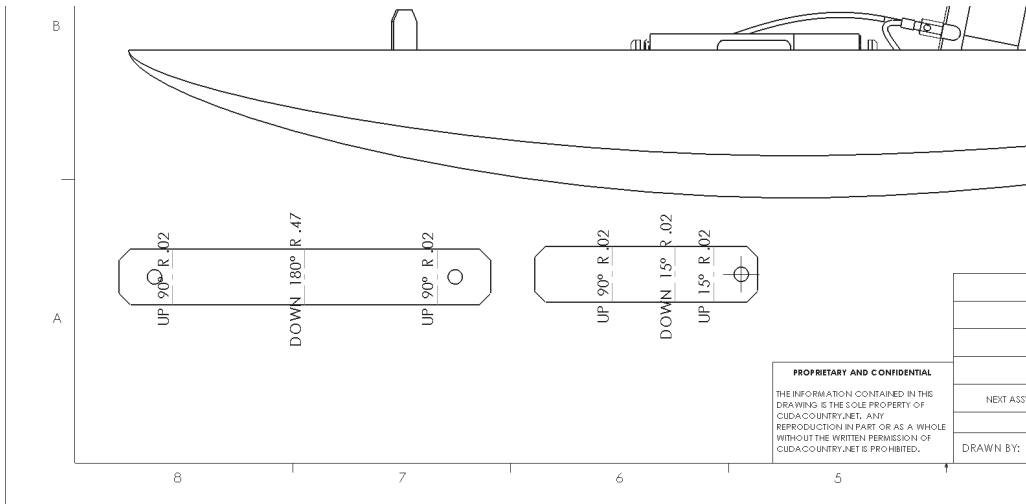
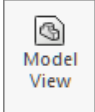


Fig. 11

E. Insert Wedge Flatten View.

Step 1. Click **Model View**  on the Drawings toolbar.

Step 2. Click **Browse** in the Property Manager.

Step 3. Select your **WEDGE** file and click Open.

Step 4. In the Model View Property Manager set:
under Orientation More Views, **Fig. 12**
check **Flat pattern**
check **Preview**
under Scale
select **Use custom scale**
Scale 1:1

Step 5. Move the cursor into the graphic area and click to place the Wedge flat pattern view, **Fig. 13**.

Step 6. Click OK  in the Property Manager.

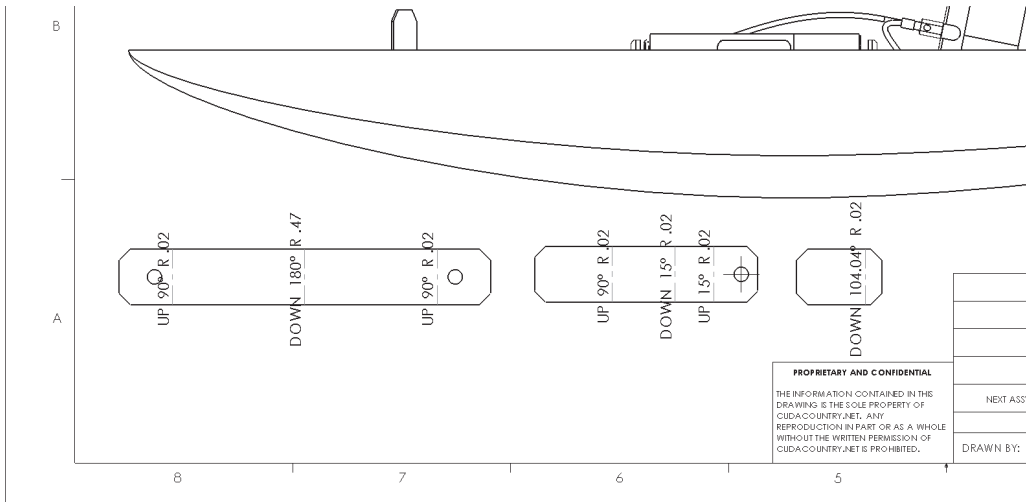


Fig. 13

Step 7. Save. Use **Ctrl-S**.

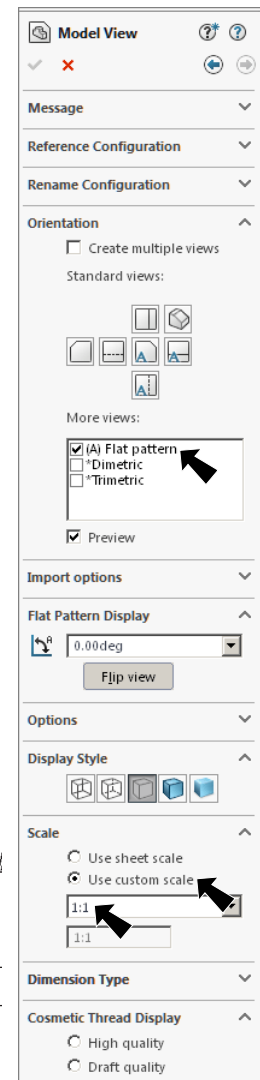
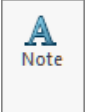


Fig. 12

F. Add Sheet Metal Notes.

Step 1. Click **Annotation**  on the Command Manager toolbar.

Step 2. Click **Note**  on the Annotation toolbar.

Step 3. In the Note Property Manger:
under Leader, **Fig. 14**

click **NO Leader** 

click just above **MOTOR MOUNT** to place the note
lock the caps and key-in **MOTOR MOUNT**, **Fig. 15**

click OK 

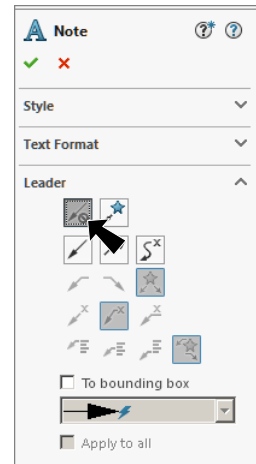


Fig. 14

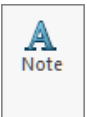
Step 4. Click **Note**  on the Annotation toolbar.

Fig. 15

Step 5. In the Note Property Manger:
under Leader, **Fig. 14**

click **NO Leader** 

click just above **SWITCH** to place the note
lock caps key-in **SWITCH**, **Fig. 16**

click OK 

Step 6. Repeat and label
WEDGE,
Fig. 17.

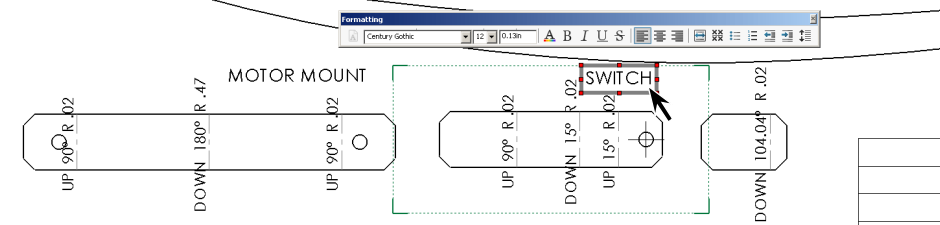
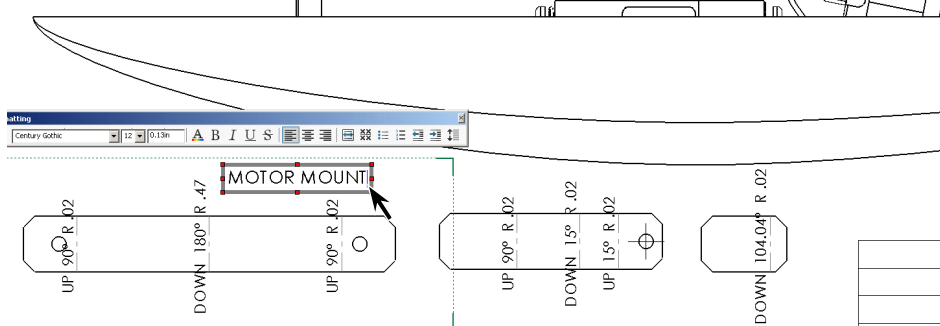


Fig. 16

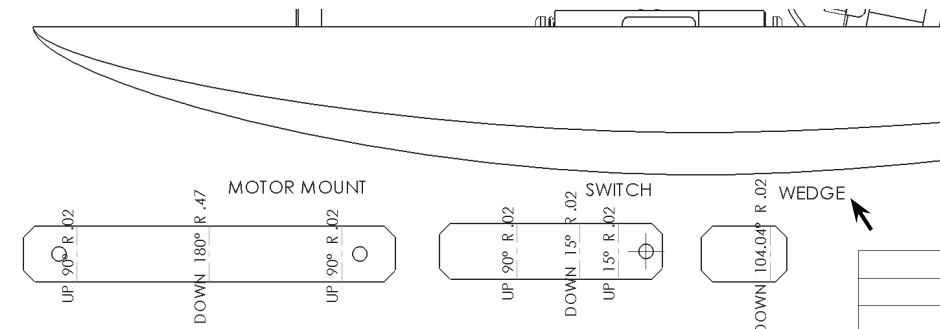



Fig. 17

G. Add Your Name and Period to Title Block.

Step 1. Use **F** key on keyboard to **fit** drawing.

Use the **Zoom to Area**  in the View toolbar to drag a zoom window around the **DRAWN BY** and **PERIOD** in the title block, **Fig. 18**.

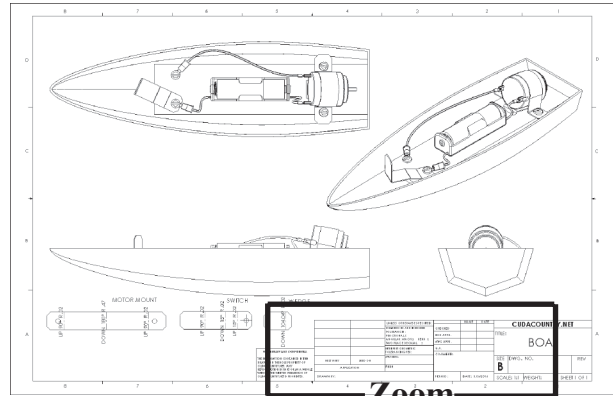
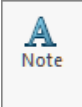


Fig. 18

Step 2. Click **Note**  on the Annotation toolbar.

Step 3. Click just to the right of **DRAWN BY**., **Fig. 19**.

Step 4. Lock the Caps and key-in **your first and last names**, **Fig. 19**.

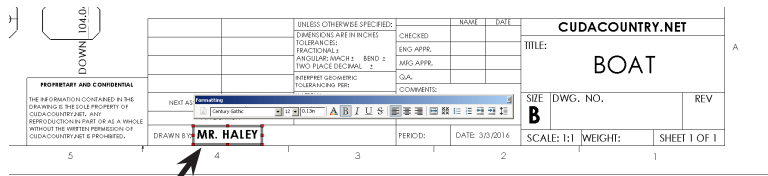
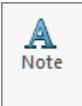


Fig. 19

Step 5. Click **OK**  in the Property Manager.

Step 6. Click **Note**  on the Annotation toolbar.

Step 7. Click just to the right of **PERIOD**., click and key-in **your Period number**, **Fig. 20**.

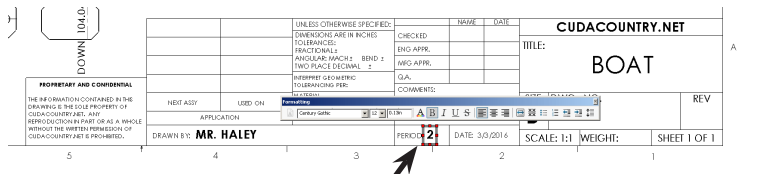


Fig. 20

Step 8. Click **OK**  in the Property Manager.

Step 9. Save. Use **Ctrl-S**.