

Boat Terminals

A. Component from Design Library.

Step 1. Click the **Design Library** tab  in the Task Pane (right side of graphics area), **Fig. 1**.

Step 2. Expand **design library** and **routing**. Then click **electrical** folder, **Fig. 1**.

Step 3. In the lower pane, **right click terminal** and click **Open**, **Fig. 1** and **Fig. 2**.

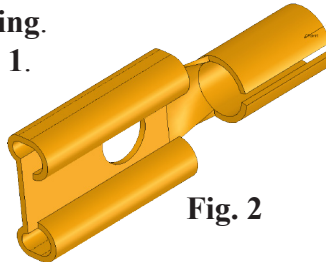
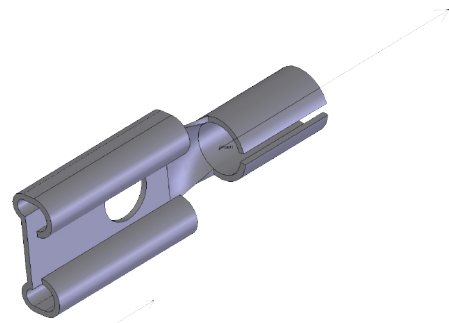


Fig. 2



B. Save As "TERMINAL-26-22 SINGLE" in folder.

Step 1. Click File Menu > Save As.

Step 2. In the Save As dialog box:

key-in **TERMINAL-26-22 SINGLE** for file name, **Fig. 3**

navigate to **My Documents/Tech Ed 14-15** folder

click **New folder** button, **Fig. 3**

key-in:

My Electrical Routing for folder name, **Fig. 4**

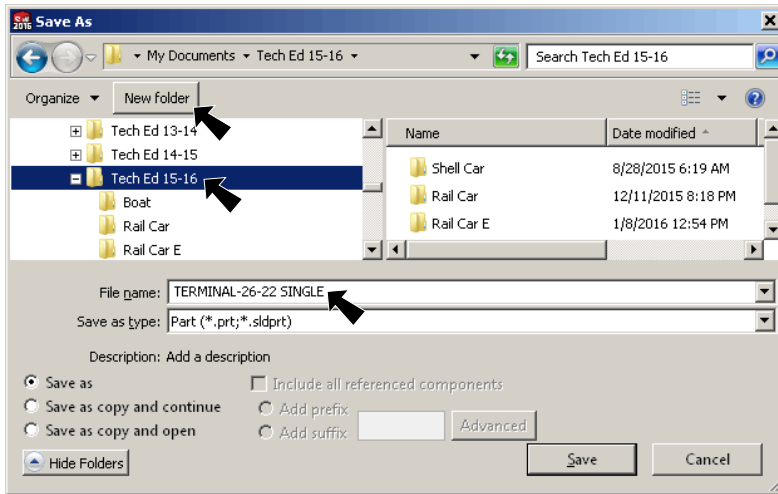


Fig. 3

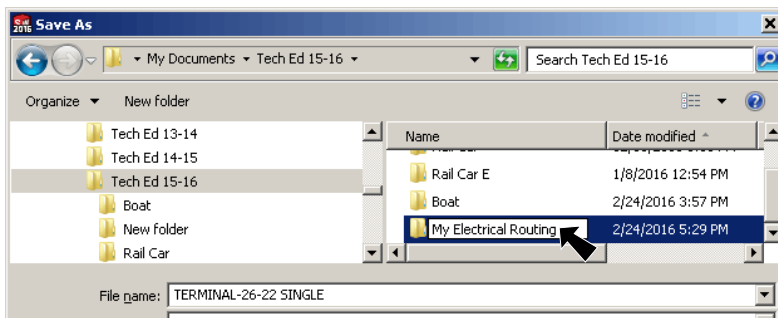


Fig. 4

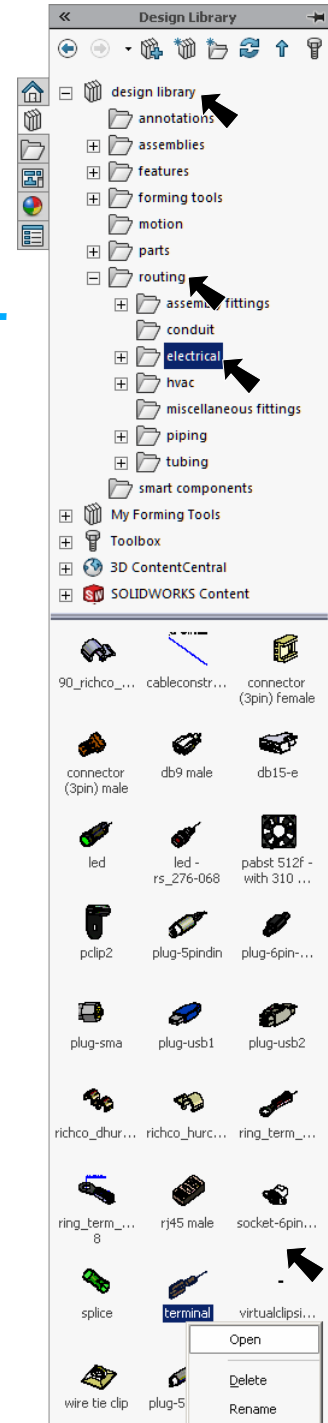


Fig. 1

Double click My Electrical Routing folder, Fig. 5

click Save, Fig. 6.

Step 3. Later, we will add the new My Electrical Routing Folder to the Design Library. For now, we'll just save our electrical components into the My Electrical Routing folder.

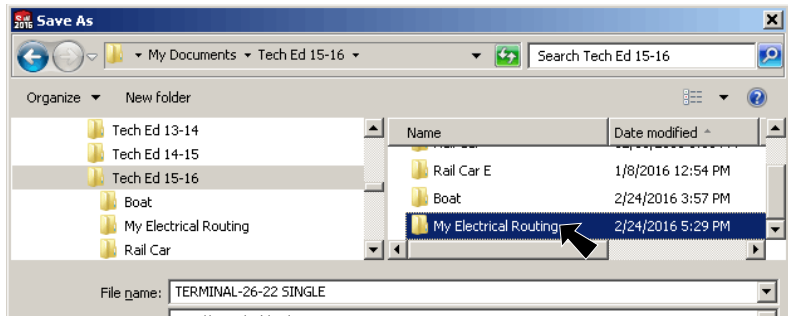


Fig. 5

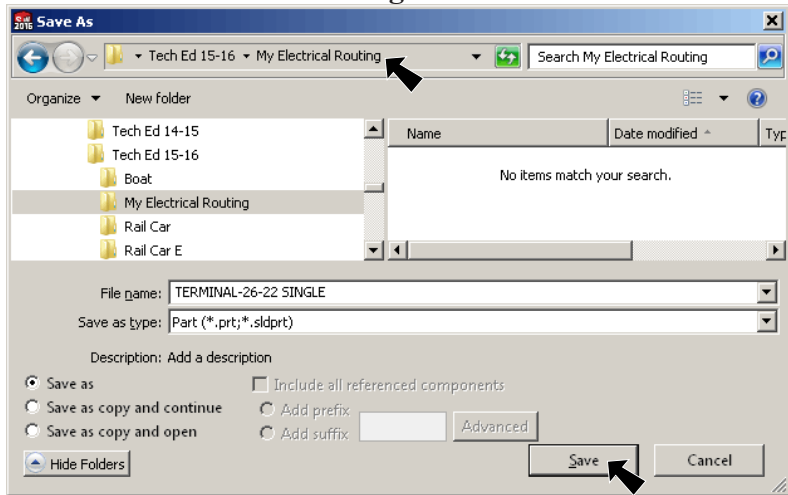



Fig. 6

C. Reorder Cut-Extrude1.

Step 1. In the Feature Manager drag the **Cut-Extrude1** to **Loft2** feature, Fig. 7 and Fig. 8. This will move the Cut-Extrude1 feature above Sketch6. We are going to scale down the terminal and don't want to scale the Cut-Extrude1 (hole) so we moved it up in the tree.

Step 2. Click **Sketch6** in the Feature Manager and click **Rollback**  on the context toolbar, Fig. 8.

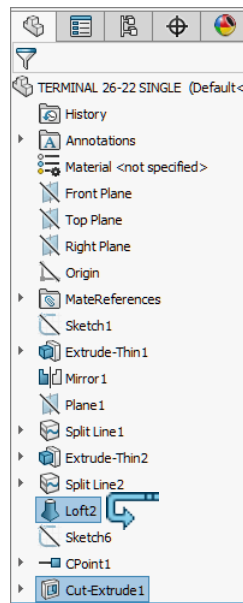


Fig. 7

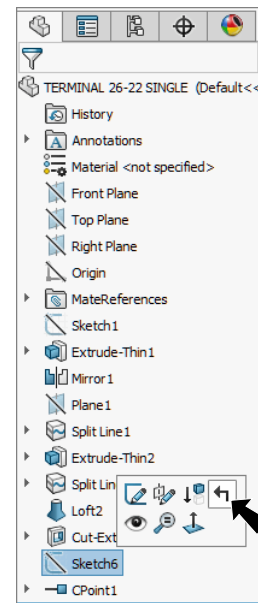


Fig. 8

D. Scale .5.

Step 1. Click Insert Menu > Features > Scale.

Step 2. In the Scale Property Manager:
under Scale about, **Fig. 9**
select **Origin**
Scale Factor .5
click OK ✓.

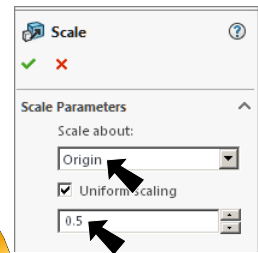


Fig. 9

Step 3. **Right click** in the Feature Manager and click **Roll to End** from menu, **Fig. 11**.

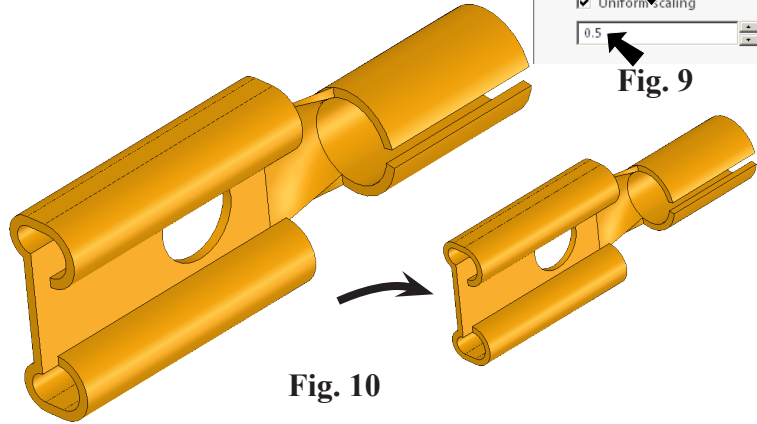



Fig. 10

Step 4. Click **Rebuild**  in the Standard toolbar. (**Ctrl-B**)

E. Edit Sketch Plane.

Step 1. Click **Sketch6** in the Feature Manager and click **Edit Sketch Plane**  on the context toolbar, **Fig. 12**.

Step 2. In the Sketch Plane Property Manager set:
under Sketch Plane/Face, **Fig. 13**
click **inside end face of barrel**, **Fig. 14**
click OK ✓.

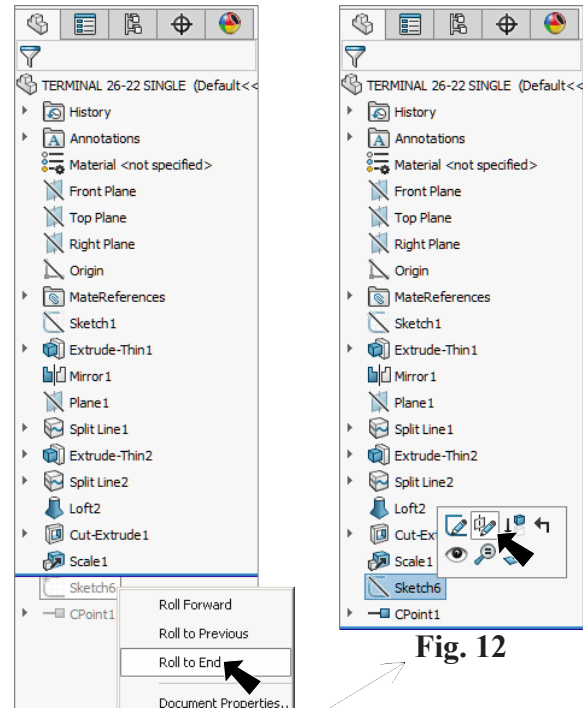


Fig. 12

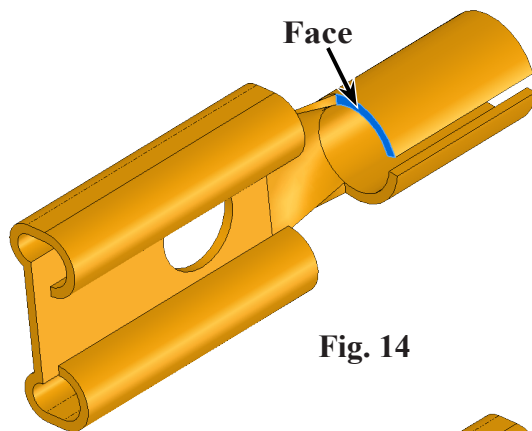


Fig. 14

Fig. 11

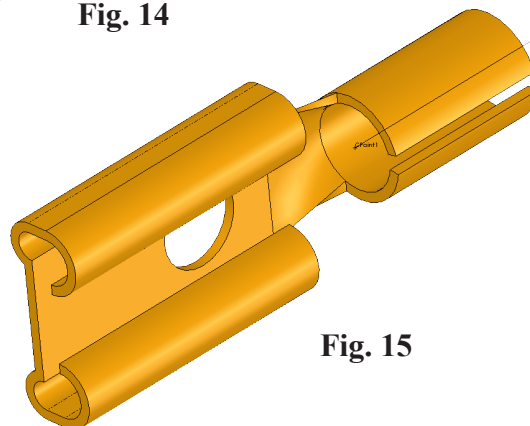


Fig. 15

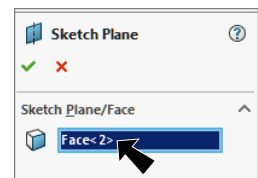



Fig. 13

F. Appearance.

Step 1. Click the part to select the part, click **Appearance Callout**  on the Context toolbar and click **TERMINAL...** , Fig. 16.

Step 2. In the Appearances Property Manager under Color, Fig. 17 click the **3rd swatch in gray column** click OK , Fig. 18.

Step 3. Save. Use **Ctrl-S**.

