



Chapter 9

CO2 Drawing

A. Top, Side, Bottom and Back Views.

Step 1. Click File Menu > New, click **Drawing Metric** and OK.

Step 2. Click **Browse** in the Property Manager.

Step 3. Select your **co2 car assembly** file and click Open.

Step 4. In the Property Manager under **Orientation**:

Click **Right** 

Check **Preview**

under **Scale**

Click **Use custom scale** and set scale to **1:1**, Fig. 1.

Step 5. Move the cursor into the graphic area. Align the left edge of the body with the left border line. Position the view lightly below the center of the drawing. Click to place the right side view as shown in Fig. 2.

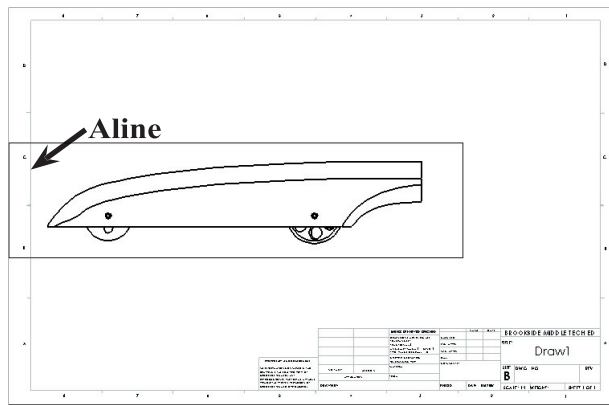


Fig. 2

Step 6. Move the cursor straight up. Center the preview between the side view you just placed and the top border line. Click to place the top view as shown in Fig. 3.

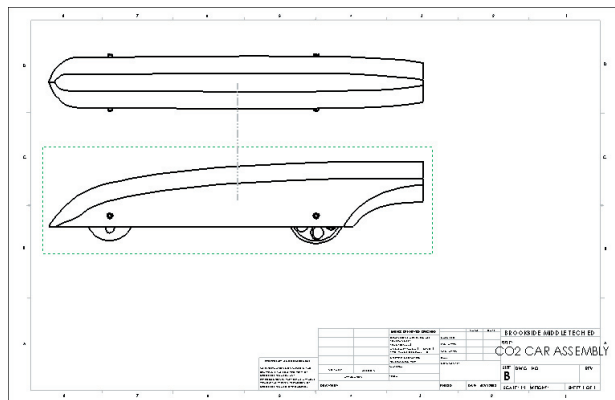


Fig. 3

Step 7. Move the cursor straight down below the side view. Center the preview between the side view and the top of the title block. Click to place the bottom view as shown in Fig. 4.

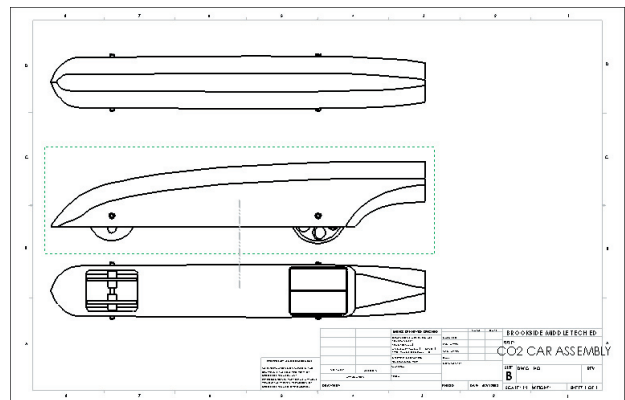


Fig. 4

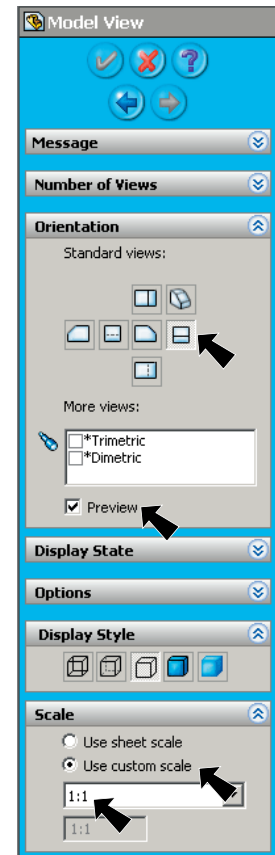
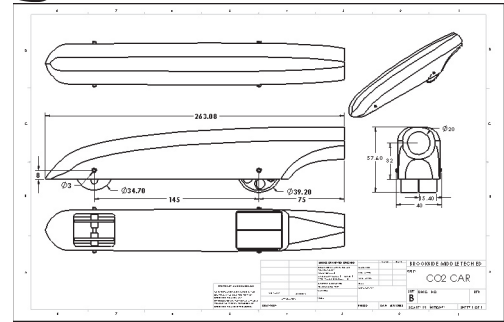


Fig. 1

Step 8. Move the cursor to the right of the side view. Center the preview between the side view and right border line. Click to place the back view as shown in **Fig. 5**.

Step 9. Click OK  in the Property Manager.

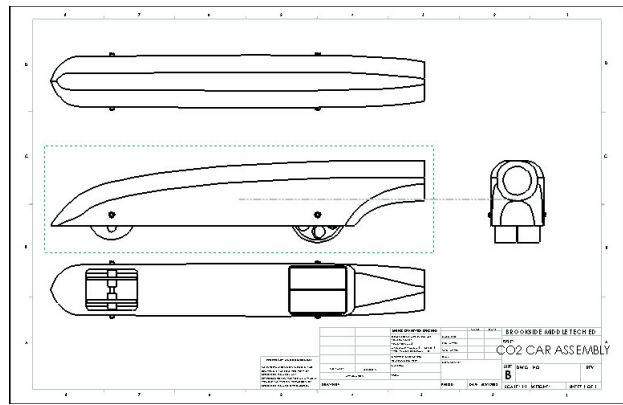

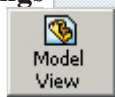


Fig. 5

Step 2. Key-in **CO2 CAR** for the filename and press ENTER.

C. Insert Isometric View.

Step 1. Click **Drawings**  on the Command Manager toolbar and **Model View**  on the Drawings toolbar.

Step 2. Click **Next**  in the Property Manager.

Step 3. In the Property Manager, under **Orientation**:

Click **Isometric**  under **Scale**

Click **Use custom scale** and set scale to **1:2**, **Fig. 6**.

Step 4. Move the cursor into the graphic area and click to place the isometric view as shown in **Fig. 7**.

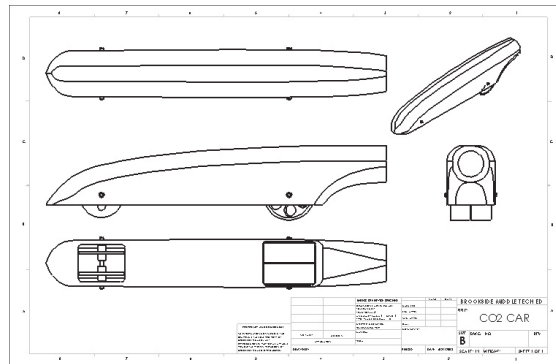


Fig. 7

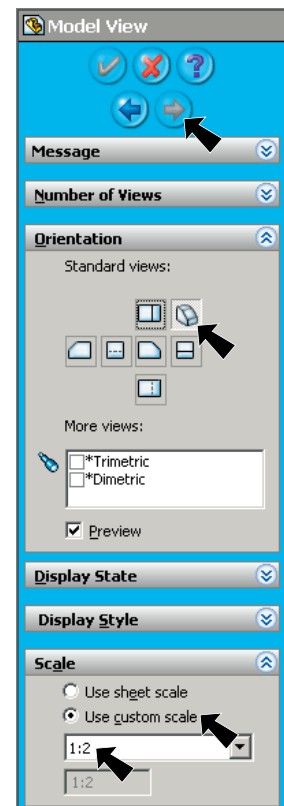



Fig. 6

Step 5. Click OK  in the Property Manager.

Step 6. Save. Use **Ctrl-S**.

D. Add Dimensions.

Step 1. Use **F** key on keyboard to **fit** drawing. Use the **Zoom to Area**  in the View toolbar to drag a zoom window around the **side view**, **Fig. 8**. Escape to unselect Zoom to Area.

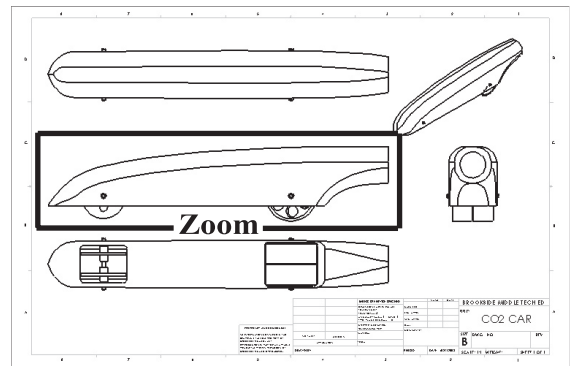



Fig. 8

Step 2. Click **Sketch**  on the Command Manager toolbar.

Step 3. Click **Smart Dimension**  on the Sketch toolbar.

Step 4. Add the dimensions to the side view as shown in **Fig. 9**. To Smart dimension click the line then move the cursor out away from the line and click. Arrange the dimensions as **Fig. 9**. **You can only place dimensions here- you can not change dimensions.** To dimension an axle or wheel diameter, click circle, then move the cursor away from the circle and click.

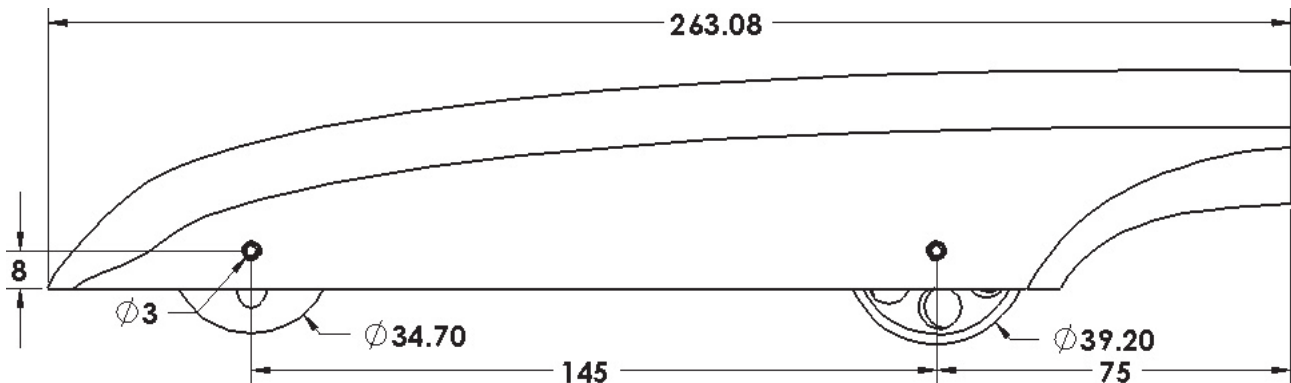



Fig. 9

Step 5. Use **F** key on keyboard to **fit** drawing. Use the **Zoom to Area**  in the View toolbar to drag a zoom window around the **back view**. Escape to unselect Zoom to Area.

Step 6. Add the dimensions to the **back view** as shown in **Fig. 10**.

Step 7. Save. Use **Ctrl-S**.

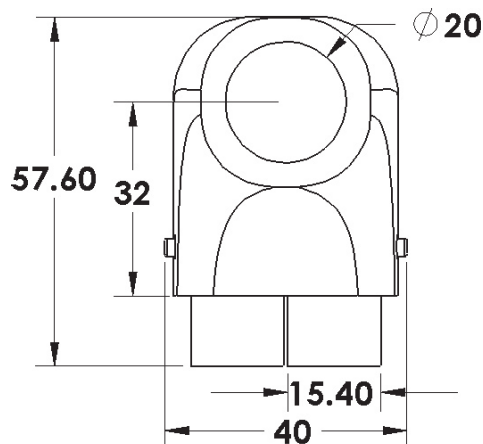


Fig. 10

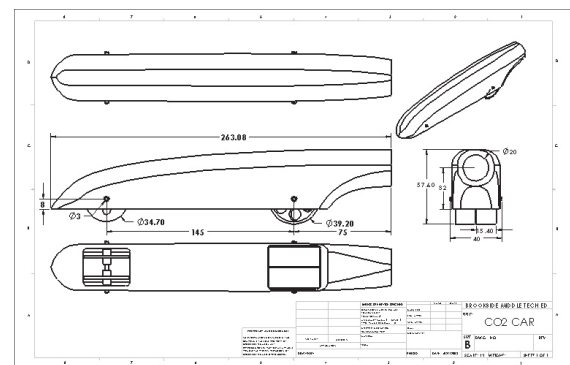




Fig. 11

E. Add Your Name and Period to Title Block.

Step 1. Use **F** key on keyboard to **fit** drawing. Use the **Zoom to Area**  in the View toolbar to drag a zoom window around the **DRAWN BY** and **PERIOD** in the title block, **Fig. 12**.
Click Zoom to Area  again or **Escape** to unselect Zoom to Area.

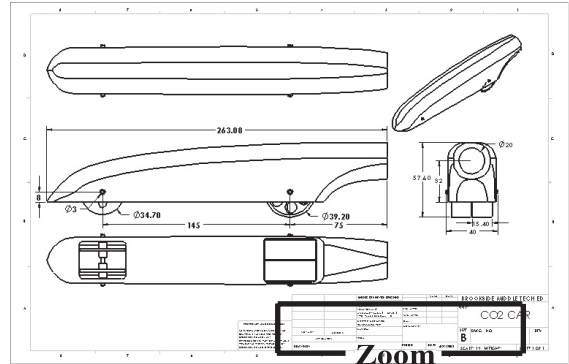
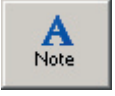


Fig. 12

Step 2. Click **Note**  on the Annotations toolbar.

Step 3. Click just to the right of **DRAWN BY**., **Fig. 13**.

Step 4. Lock the Caps and key-in **your first and last names**, **Fig. 13**.

Step 5. Click **OK**  in the Property Manager.

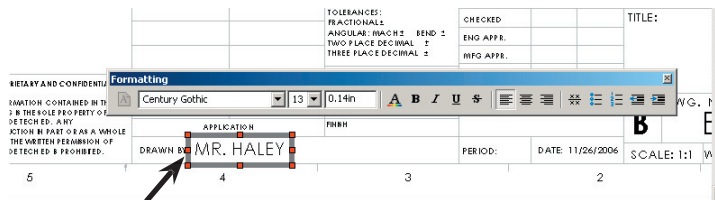



Fig. 13

Step 6. Click **Note**  on the Annotations toolbar.

Step 7. Click just to the right of **PERIOD**., click and key-in **your Period number**, **Fig. 14**.

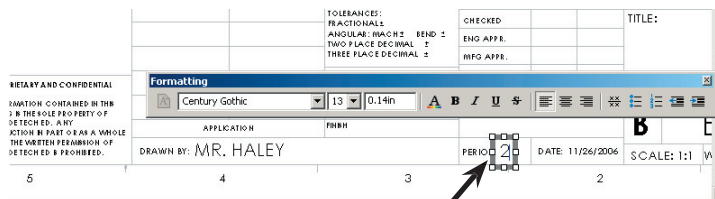


Fig. 14

Step 8. Click **OK**  in the Property Manager.

Step 9. Save. Use **Ctrl-S**.