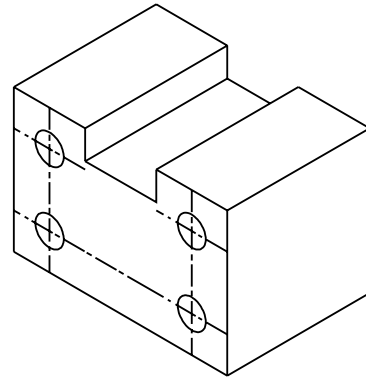


**Chapter 8****CHANNEL BLOCK****A. OPEN B FILE.**

Step 1. When you start a new drawing away start with the B file. If you started this drawing as the B file go directly to Steps B. If your did not start as the B file complete these Steps: Click Open from the File Menu. Click No to save current part. Key in **a:b** for the filename and press ENTER.

**B. CHANGE TO SIDE VIEW.**

Step 1. Change to the Side View. Use **ALT-V 2**. Hold down ALT and press V. Key in 2 and press ENTER.

**C. CREATE A RECTANGLE.**

Step 1. F1 CREATE.

Step 2. F1 LINE.

Step 3. F7 RECTANGLE.

Step 4. F2 WIDTH/HEIGHT.

Step 5. Key in 3 for the width and press ENTER.

Step 6. Key in 2 for the height and press ENTER.

Step 7. F9 KEY-IN.

Step 8. Key in:  
Zero (0) for coordinate X and press ENTER.  
0 for Y and press ENTER.  
0 for Z and press ENTER.

Step 9. To center the rectangle on the screen use **ALT-A**. Hold down ALT and press A.

**D. DELETE THE TOP LINE.**

Step 1. The top line is no longer needed. Use **CTRL-Q** to delete it. Hold down CTRL and press Q. Select the top line of the rectangle with a click and press ENTER, **Fig. 1**.

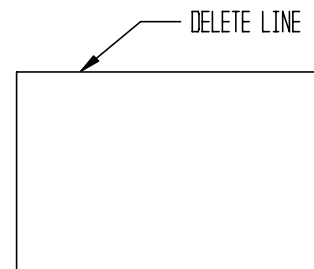


FIG. 1

**Fit on Screen ALT-A****Delete CTRL-Q****Redraw CTRL-R****Half Size ALT-H**

**E. DRAW LINES .**

Step 1. ESC to Main Menu.

Step 2. F1 CREATE.

Step 3. F1 LINE.

Step 4. F1 ENDPOINTS.

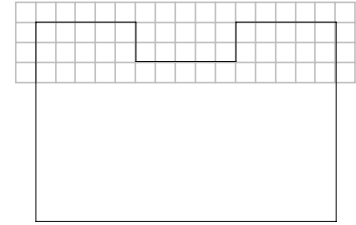


FIG. 2

Step 5. Draw the lines in **Fig. 2**. Use the grid to determine the location of the lines.

**G. SAVE TO DISK .**

Step 1. Click **Save As** from the File Menu.

Step 2. Key in **a:chanblk** for the filename and press ENTER.

Step 3. Press ESC for Part Description.

**G. TURN OFF GRID and SNAP .**

Step 1. Turn off the Grid and Snap. Use **CTRL-G**. Hold down CTRL and press G.

Step 2. Click **Off** in Grid Properties Display.

Step 3. Click to **uncheck Active** in Snap Properties.

Step 4. Click OK.

**H. ADD 3rd DIMENSION .**

Step 1. Change to Isometric View. Use **ALT-V 7**. Hold down ALT and press V. Key in 7 and press ENTER.

Step 2. Use **ALT-A** to center the drawing on the screen. Hold down ALT and press A.

Step 3. ESC to Main Menu.

Step 4. F4 X-FORM.

Step 5. F1 DELTA.

Step 6. F3 JOIN.

Step 7. F7 ALL DISPLAYED.

Step 8. F1 ALL.

<b>Fit on Screen ALT-A</b>	<b>Delete CTRL-Q</b>	<b>Redraw CTRL-R</b>	<b>Half Size ALT-H</b>
----------------------------	----------------------	----------------------	------------------------

Step 9. Key in 1 for the Number of Copies.

Step 10. Key in:  
 0 for dX and press ENTER  
 2 for dY and press ENTER  
 0 for dZ and press ENTER.

Step 11. ESC to Main Menu.

Step 12. Use **ALT-A** to center the drawing on the screen. Hold down ALT and press A.

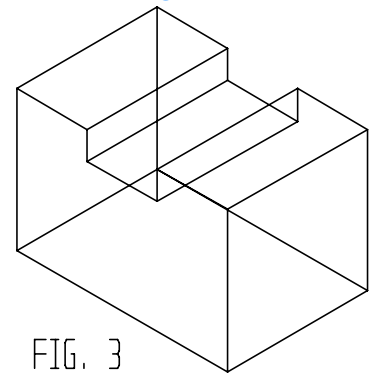


FIG. 3

**I. CREATE CENTER LINES FOR THE HOLES.**

Step 1. Change to Front View. Use **ALT-V 2**. Hold down ALT and press V. Key in 2 and press ENTER.

Step 2. Draw the next lines, the center lines in a different color. Change the color to **green**. Click the color swatch in the side Tool Bar. Click the green, number 1 .

Step 3. Change the line type to Center Lines. Use **ALT-T**. Hold down ALT and press T. Click on the Center Line, line number 3. Click OK.

Step 4. ESC to Main Menu.

Step 5. F1 CREATE.

Step 6. F1 LINE.

Step 7. F3 PARALLEL.

Step 8. F2 AT A DISTANCE.

Step 9. Key in **.5** for the distance and press ENTER.

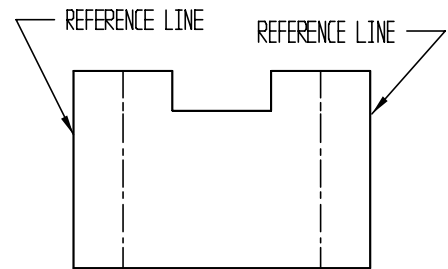


FIG. 4

Step 10. Draw parallel vertical lines in from both sides, **Fig. 4**. The side of the rectangle will be the reference line. Click the left side of the rectangle as the reference line. To indicate side, click slightly inside the rectangle. Repeat on the other side of rectangle. That is, click the right side as the reference line, then indicate side by clicking slightly inside the rectangle.

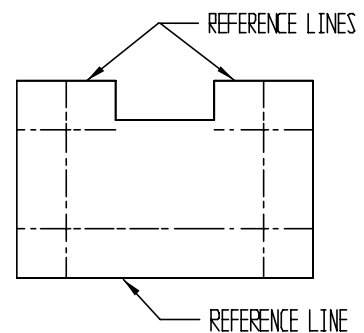


FIG. 5

Step 11. Continue to draw parallel lines up from the bottom and down from both top lines. Always select a new line as the reference line. To indicate side, click inside the rectangle. Do not place duplicate lines on top of one other. Complete like **Fig. 5**.

<b>Fit on Screen ALT-A</b>	<b>Delete CTRL-Q</b>	<b>Redraw CTRL-R</b>	<b>Half Size ALT-H</b>
----------------------------	----------------------	----------------------	------------------------

**J. CREATE CIRCLE.**

Step 1. ESC to Main Menu.

Step 2. Draw the next lines a different color. Change the color to **yellow**. Click the color swatch in the side Tool Bar. Click the yellow, number 4 .

Step 3. Change the line type back to Object Lines. Use **ALT-T**. Hold down ALT and press T. Click the Object line, Line number 1. Click OK.

Step 4. F1 CREATE.

Step 5. F3 CIRCLE.

Step 6. F2 CENTER and DIAMETER.

Step 7. Key in **.4** for the diameter.

Step 8. F5 INTERSECTION as the method of locating center of the circles.

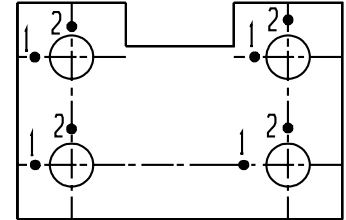


FIG. 6

Step 9. Click Line 1 and Line 2 at each circle location, **Fig. 6**.

Step 10. Change to Isometric View. Use **ALT-V 7**. Hold down ALT and press V. Key in 7 and press ENTER.

Step 11. Use **CTRL-S** to save. Hold down CTRL and press S.

Step 12. Delete the 5 hidden lines. Use CTRL -Q, see **Fig. 7**.

Step 13. Trim the back line of the channel. Use EDIT, TRIM and FIRST, see **Fig. 10**.

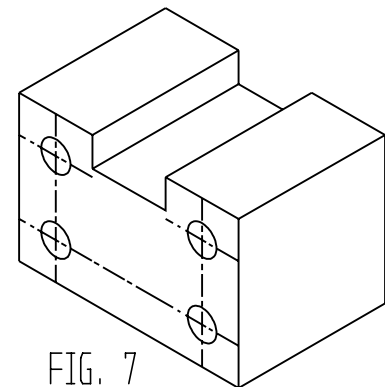


FIG. 7

**K. ADD YOUR NAME AND THE PERIOD TO DRAWING.**

Step 1. Use **Alt-H** to reduce the drawing half size. Hold down ALT and press H. Use: **Detail, Note, Key-In** commands to add text.

Step 2. Use **CTRL-S** to save. Hold down CTRL and press S.

Fit on Screen ALT-A	Delete CTRL-Q	Redraw CTRL-R	Half Size ALT-H
---------------------	---------------	---------------	-----------------