

Chapter 7**STEP BLOCK****A. OPEN B FILE.**

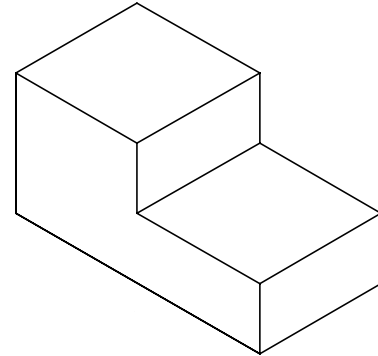
Step 1. When you start a new drawing always start with the B file. If you started this drawing as the B file go directly to Steps B. If your did not start as the B file complete these Steps:

Step 2. Click the **File** from the Menu Bar.

Step 3. Click **Open** from the File Menu..

Step 4. Click **No** to save current part.

Step 5. Key in **a:b** for the filename and press ENTER.

**B. CHANGE TO SIDE VIEW.**

Step 1. Change to Side View. Use **ALT-V 2**. Hold down ALT and press V. Key in 2 and press ENTER.

Step 7. Use **Alt-D** to double the drawing size to see the grid. Hold down ALT and press D.

C. CREATE A RECTANGLE.

Step 1. ESC to Main Menu.

Step 2. F1 CREATE.

Step 3. F1 LINE.

Step 4. F7 RECTANGLE.

Step 5. F2 WIDTH/HEIGHT.

Step 6. Key in **4** for the width and press ENTER.

Step 7. Key in **2** for the height and press ENTER.

Step 8. F9 KEY-IN.

Step 9. Key in:
Zero (0) for coordinate X and press ENTER.
0 for Y and press ENTER.
0 for Z and press ENTER.

Step 10. Use **ALT-A** to center the drawing on the screen. Hold down ALT and press A.

Fit on Screen ALT-A**Delete CTRL-Q****Redraw CTRL-R****Half Size ALT-H**

D. CREATE LINE USING LINE STRING.

Step 1. ESC to Main Menu.

Step 2. F1 CREATE.

Step 3. F1 LINE.

Step 4. F1 ENDPOINTS.

Step 5. F1 CURSOR.

Step 6. Use the grid to measure, each grid is .2

Step 7. F1 CURSOR. To start the line move the cursor 2 inches from the top left corner (10 grids), to Point 1, **Fig. 1** and click. Move the cursor down 1 inch to Point 2 and click. Then, draw in the line to Grid 3. That is, click to start the line at Point 2 and click Point 3.

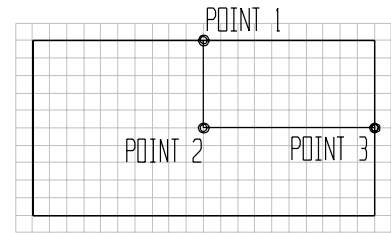


FIG. 1

Step 8. Use CTRL-R to clear temporary markers. Hold down CTRL and press R.

E. EDIT USING TRIM FIRST.

Step 1. ESC to Main Menu.

Step 2. F2 EDIT.

Step 3. F1 TRIM/EXTEND.

Step 4. F1 FIRST.

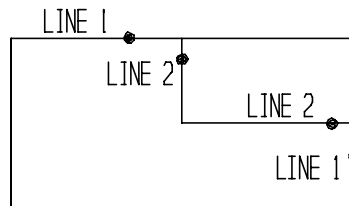


FIG. 2

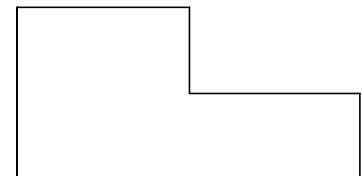


FIG. 3

Step 5. Trim lines to form a step. To trim part of a line, click the line you are to keep, Line 1, **Fig. 2**. Move cursor close to the intersection with Line 2 and click. Repeat at other line. That is, click the part of the line you are keeping, Line 1, then move cursor close to the intersection with Line 2 and click.

F. MAKE CHANGES TO THE DISPLAY.

Step 1. Turn off the Grid and Snap. Use **CTRL-G**. Hold down CTRL and press G.

Step 2. Click **Off** in Grid Properties Display.

Step 3. Click to **uncheck Active** in Snap Properties. Click OK.

Step 4. Change to the Isometric View. Use **ALT-V 7**. Hold down ALT and press V. Key in 7 and press ENTER. Use **ALT-A** to center the drawing.

Fit on Screen ALT-A	Delete CTRL-Q	Redraw CTRL-R	Half Size ALT-H
----------------------------	----------------------	----------------------	------------------------

G. CREATE THE 3rd DIMENSION.

- Step 1. ESC to Main Menu.
- Step 2. F4 X-FORM.
- Step 3. F1 DELTA.
- Step 4. F3 JOIN.
- Step 5. F7 ALL DISPLAYED.
- Step 6. F1 ALL.
- Step 7. Key in 1 for the Number of Copies and press ENTER.
- Step 8. Key in:
0 for dX and press ENTER.
2 for dY and press ENTER.
0 for dZ and press ENTER.
- Step 9. ESC to Main Menu.
- Step 10. Use **ALT-A** to center the drawing on the screen. Hold down ALT and press A.

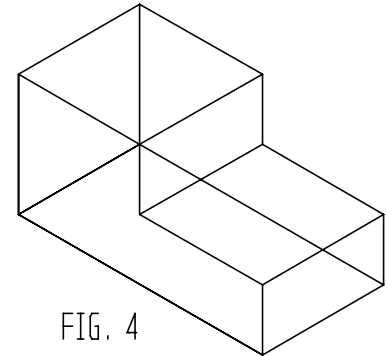


FIG. 4

H. CHANGING VIEWS.

- Step 1. Change to View 8. Use **ALT-V 8** to change to the Axonometric View. Hold down ALT and press V. Key in 8 and press ENTER.
- Step 2. Use **ALT-A** to center the drawing on the screen. Hold down ALT and press A.
- Step 3. Change back to the Isometric View. Use **ALT-V 7** to change to the Isometric View. Hold down ALT and press V. Key in 7 and press ENTER.

I. REFINE THE ISOMETRIC VIEW.

- Step 1. Delete the hidden lines by using **CTRL-Q**, Fig. 5. Hold down CTRL and press Q. Move the cursor over the lines, select the three lines with clicks and press ENTER.
- Step 2. Now look at View 8. **ALT-V 8**.
- Step 3. Change back to the Isometric View. Use **ALT-V 7**.

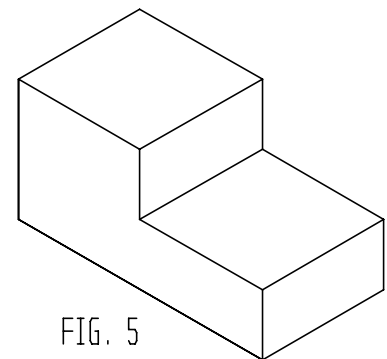


FIG. 5

J. ADD YOUR NAME AND THE PERIOD TO DRAWING.

- Step 1. Use **Alt-H** to reduce the drawing half size. Use: **Detail, Note, Key-In** commands to add text.
- Step 2. Click **Save As** from the File Menu. Key in **a:stepblk** for the filename and press ENTER.