

MOTOR MOUNT PATTERN

A. Create Rectangle.

Step 1. If necessary create a new Mastercam file, click File Menu > New.




Step 2. Click Create Menu > Create Rectangle.
Or click the Rectangle Tool  in the toolbar.



Fig. 1

Step 3. Key-into the ribbon bar:

3.3 for Width 
.5 for Height , Fig. 1.

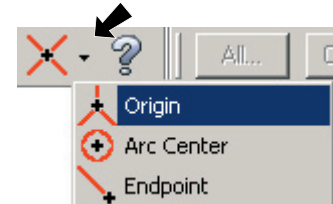


Fig. 2


Step 4. Click the down arrow in the Auto Cursor ribbon bar and click Origin  to place the rectangle, Fig. 2 and Fig. 3.



Fig. 3

Step 5. Press ESC to close the ribbon bar.

Step 6. Click Fit  or use Alt-F1 to fit the rectangle on the screen.

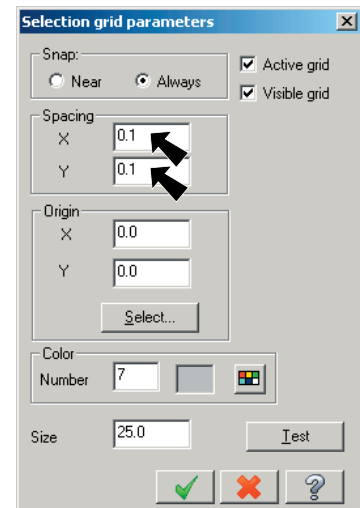


Fig. 4

B. Set Grid And Snap.

Step 1. Change the Grid and Snap to .1. Use Alt-G.

Step 2. Set: X and Y Spacing to .1, Fig. 4.

Step 3. Click OK .

C. Draw Bend Lines.

Step 1. Draw the next lines, the bend lines a different color and style.
Click Attributes in the Status Bar at the bottom of the screen.

Click the Color button  and click **green, number 10** and OK .

Step 2. Click the Line Style down arrow. Select the **dashed style**, 2nd line style and click OK.

Step 3. Click Create Menu > Line > Create Line Endpoint.



Fig. 5

Step 4. Draw the lines in Fig. 5. Use the grid to determine the location of the lines.



Fit on Screen Alt-F1	Delete F5	Repaint F3	Zoom In F1	Unzoom Page Down
----------------------	-----------	------------	------------	------------------

D. Save Your File.

Step 1. Click File Menu > Save As.

Step 2. Key-in **motor mount pattern** for file name and press ENTER.

E. Holes.

Step 1. Draw the holes a different color and change line style back to solid. Click Attributes in the Status Bar at the bottom of the screen. Click the Color button  and click **red, number 12** and OK .

Step 2. Click the Line Style down arrow. Select the **solid style**, 1st line style and click OK.

Step 3. Click Create Menu > Arc > Create Circle Center Point..



Step 4. Key-in **.125** for diameter . **Lock the Diameter.** Click the Diameter button  to lock. The field turn red when locked.



Fig. 6

Step 5. Key-into the AutoCursor ribbon bar:

.3 for X

.25 for Y

and press **ENTER two times**, Fig. 7.

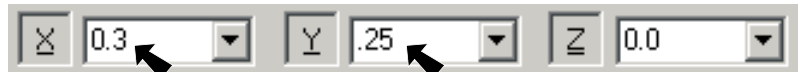


Fig. 7

and

3 for X

.25 for Y

and press **ENTER two times**, Fig. 8.

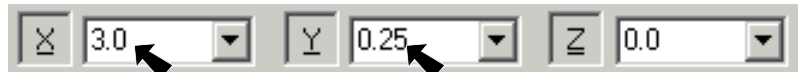


Fig. 8

Step 6. Press ESC to close the ribbon bar.

Step 7. Save your drawing. Click File Menu > Save.
(Alt-F S)

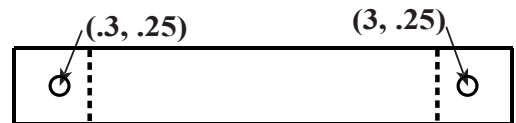


Fig. 9

F. Chamfer Corners.

Step 1. Set the color for the chamfers to the color of the rectangle, **cyan**. Use **Alt-X**, then click a line of the rectangle. Click the line again to unselect it.

Step 2. Click Create Menu > Chamfer > Chamfer Chains.

Step 3. Press ENTER to close the Chain dialog box.



Fig. 10

Step 4. Set the Chamfer to **.1**  in the ribbon bar, Fig. 10.

Step 5. Click the Chain button  in the ribbon bar, Fig. 10.

Fit on Screen Alt-F1	Delete F5	Repaint F3	Zoom In F1	Unzoom Page Down
----------------------	-----------	------------	------------	------------------

Step 6. Click a line of the rectangle and press ENTER, **Fig. 11.**



Fig. 11

Step 7. Press ESC to close the ribbon bar.

Step 8. Save your drawing. Use **Alt-F S.**

G. Label Bend Lines.

Step 1. Click Create > Drafting > Create Note.

Step 2. Lock the Caps, key-in: **BEND**

Step 3. Click **Label with Multiple Leaders**, **Fig. 12.**

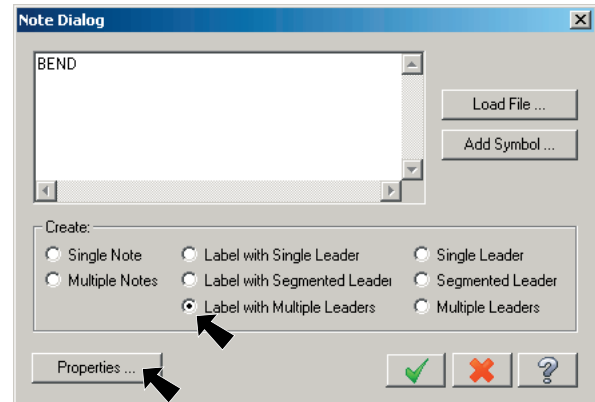


Fig. 12

Step 4. Click the Properties Button.

Step 5. Set **Text Height .1** and click OK, **Fig. 13.**

Step 6. Click OK again.

Step 7. Click the left green bend line at Position 1 for the arrowhead position, **Fig. 14.**

Step 8. Click the right green bend line at Position 2 for the arrowhead position 2, **Fig. 14.**

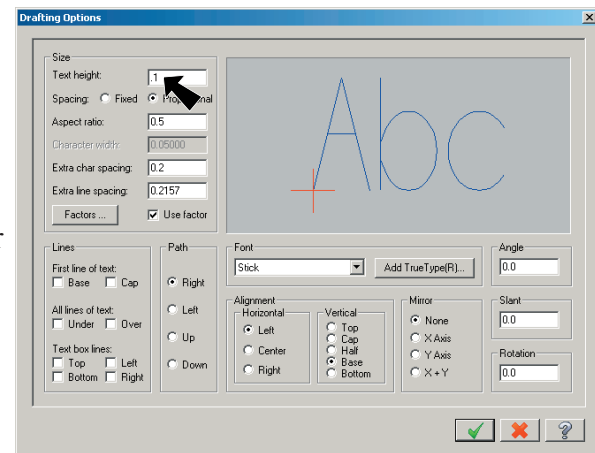


Fig. 13

Step 9. Press the ESC key.

Step 10. Click Position 3 for the text position, **Fig. 14.**

Step 11. Save your drawing. Click File Menu > Save. Or **Alt-F S.**

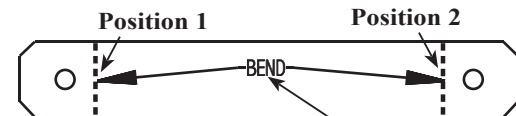


Fig. 14

H. Add Your Names And The Period To The Drawing.

Step 1. Click Create Menu > Drafting > Create Note.

Step 2. Click **Single Note.**

Step 3. Lock the Caps, key-in: DRAWN BY: FIRST AND LAST NAME AND FIRST AND LAST NAME AND PERIOD 1 (or whatever your period is) and click OK .

Step 4. Center the text at the bottom of the drawing and click.

Step 5. Save your drawing. Click File Menu > Save. Or **Alt-F S.**

Fit on Screen Alt-F1	Delete F5	Repaint F3	Zoom In F1	Unzoom Page Down
-----------------------------	------------------	-------------------	-------------------	-------------------------