
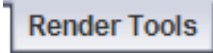


PhotoView 360 Render



A. Enable Render Tools Toolbar.

Step 1. Right click Sketch  on the Command Manager toolbar and select **Render Tools**, Fig. 1.

Step 2. Click **Render Tools**  on the Command Manager toolbar.

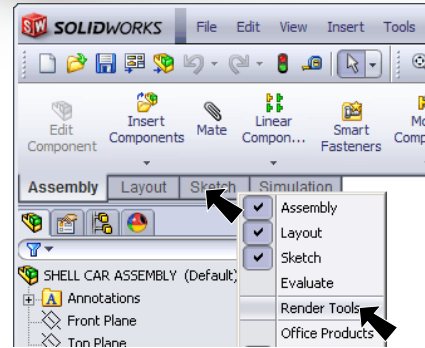


Fig. 1

B. Edit Scene.

Step 1. Click **Preview Window**  on the Render Tools toolbar, Fig. 2.

Step 2. Click **Edit Scene**  on the Render Tools toolbar.

Step 3. In the Scenes Task pane lower pane select **Rooftop**, Fig. 3.

Step 4. In the Edit Scene Property Manager set:
under Background
Background Type to Color, Fig. 4

under Floor

click **Flip offset direction** 
Floor offset distance 5

click **OK**  in the Property Manager.



Fig. 2



Fig. 5

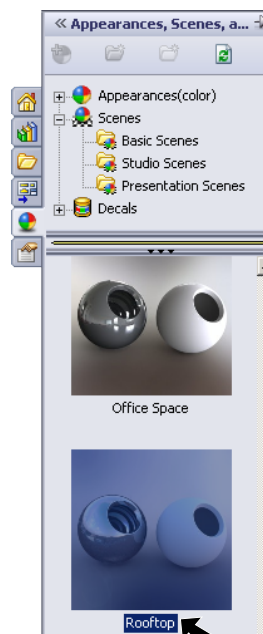


Fig. 3

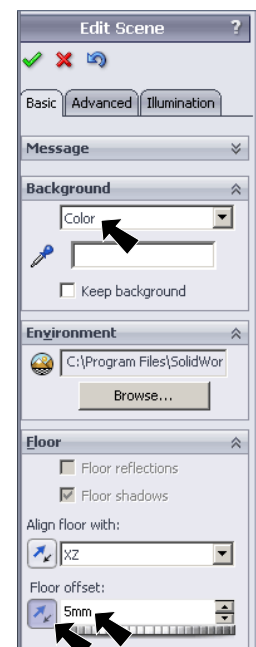


Fig. 4

C. Final Render.

Step 1. Click **Options**  on the Render Tools toolbar.

Step 2. In the Options Property Manager set:

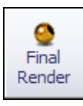
under Output Image Setting
Output Image size Use SolidWorks View, Fig. 6

under Render Quality
Preview render quality Good
Preview render quality Best

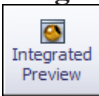
click OK  in the Property Manager.

Step 3. Close the Preview window.

Step 4. Click **Integrated Preview**  on the Render Tools toolbar.

Step 5. Click **Final Render**  on the Render Tools toolbar.

Step 6. The rendering might take several minutes depending on your computer. After rendering is completed, click **Same Image** and **Close Window**.

Step 7. Turn off **Integrated Preview**  on the Render Tools toolbar.

Step 8. Save. Use Ctrl-S.

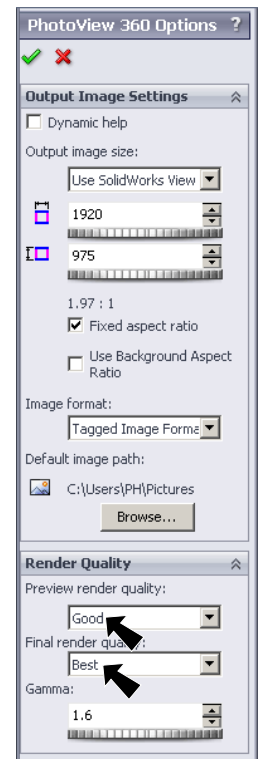


Fig. 6

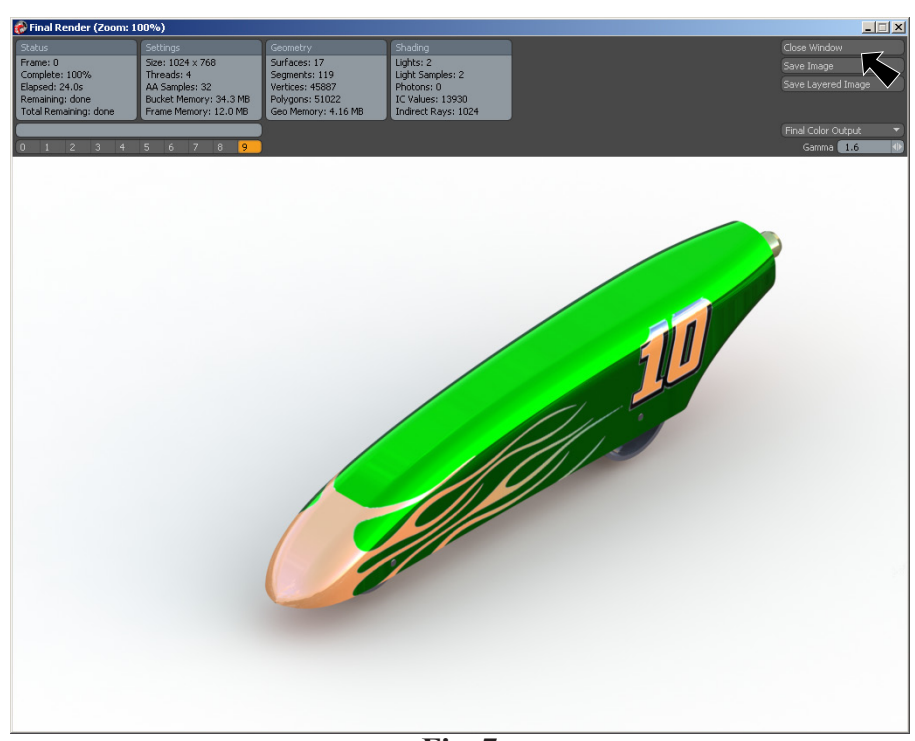


Fig. 7