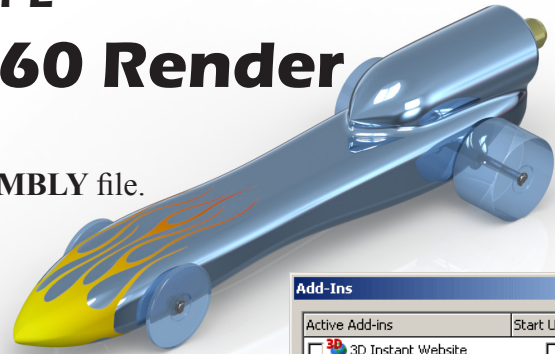


PhotoView 360 Render



A. Enable Render Tools Toolbar.

Step 1. If necessary, open your RAIL CAR E ASSEMBLY file.

Step 2. If necessary, turn on PhotoView 360. Click Tools Menu > Add-Ins. Click to place a check in **PhotoView 360** check boxes under **Active Add-ins** and under **Start Up** and click OK, Fig. 1.

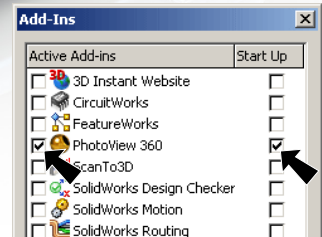

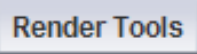


Fig. 1

Step 3. Right click **Sketch**  on the Command Manager toolbar and select **Render Tools**, Fig. 2.

Step 4. Click **Render Tools**  on the Command Manager toolbar.

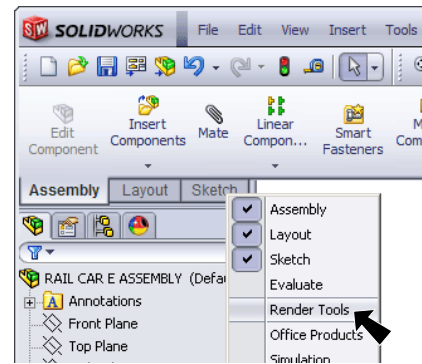


Fig. 2

B. Edit Scene.

Step 1. Click **Preview**



Window on the Render Tools toolbar, Fig. 3.



Fig. 3

Step 2. Click **Edit**



Scene on the Render Tools toolbar.

Step 3. In the Scenes Task pane lower pane select **Backdrop - Studio Room**, Fig. 4.

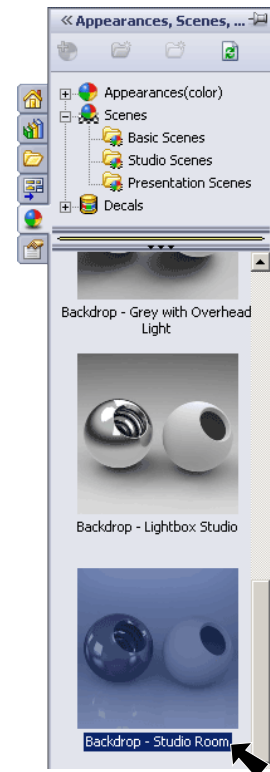


Fig. 4

Step 4. In the Edit Scene Property Manager set: under Color **Background Type Color**, Fig. 5.

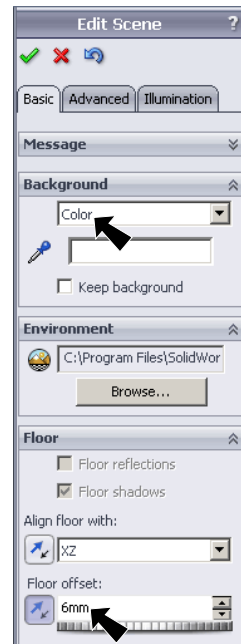



Fig. 5

under Floor **Floor offset to 6.**

Step 5. Click the **Illumination** tab at the top of the Property Manager and set **Scene reflectivity 2.5**, **Fig. 6** and **Fig. 7** click OK .

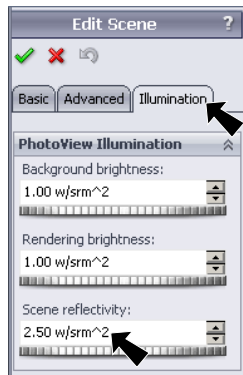


Fig. 6

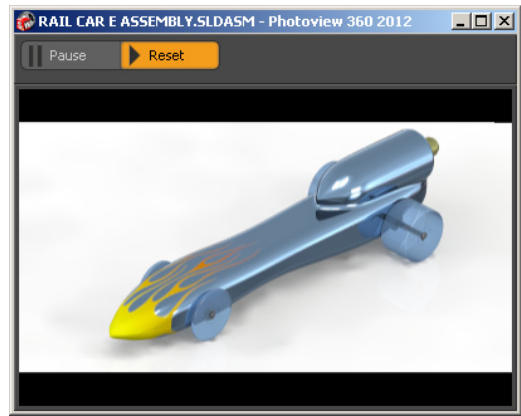


Fig. 7

Step 6. Click **Options**  on the Render Tools toolbar.

Step 7. In the Options Property Manager set:

under Output Image Setting

Output Image size Use SolidWorks View, Fig. 8.

under Render Quality

Preview render quality Good

Preview render quality Best

click OK .

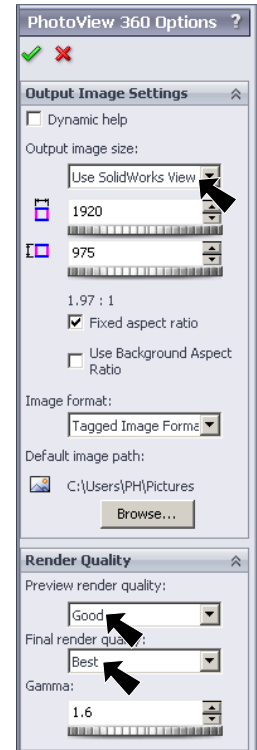
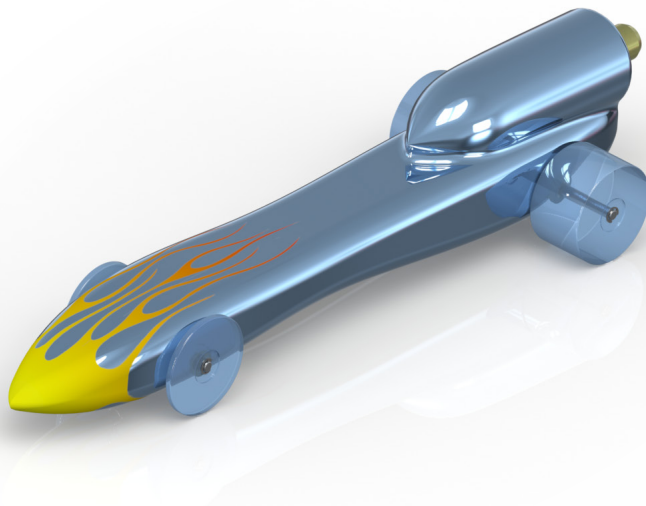


Fig. 8



Step 8. Close the Preview window.

Step 9. Click **Integrated Preview**  on the Render Tools toolbar.

Step 10. Click **Final Render**  on the Render Tools toolbar.

Step 11. The rendering might take several minutes depending on your computer. After rendering is completed, click **Same Image** and **Close Window**.

Step 12. Turn off **Integrated Preview**  on the Render Tools toolbar.

Step 13. Save. Use Ctrl-S.

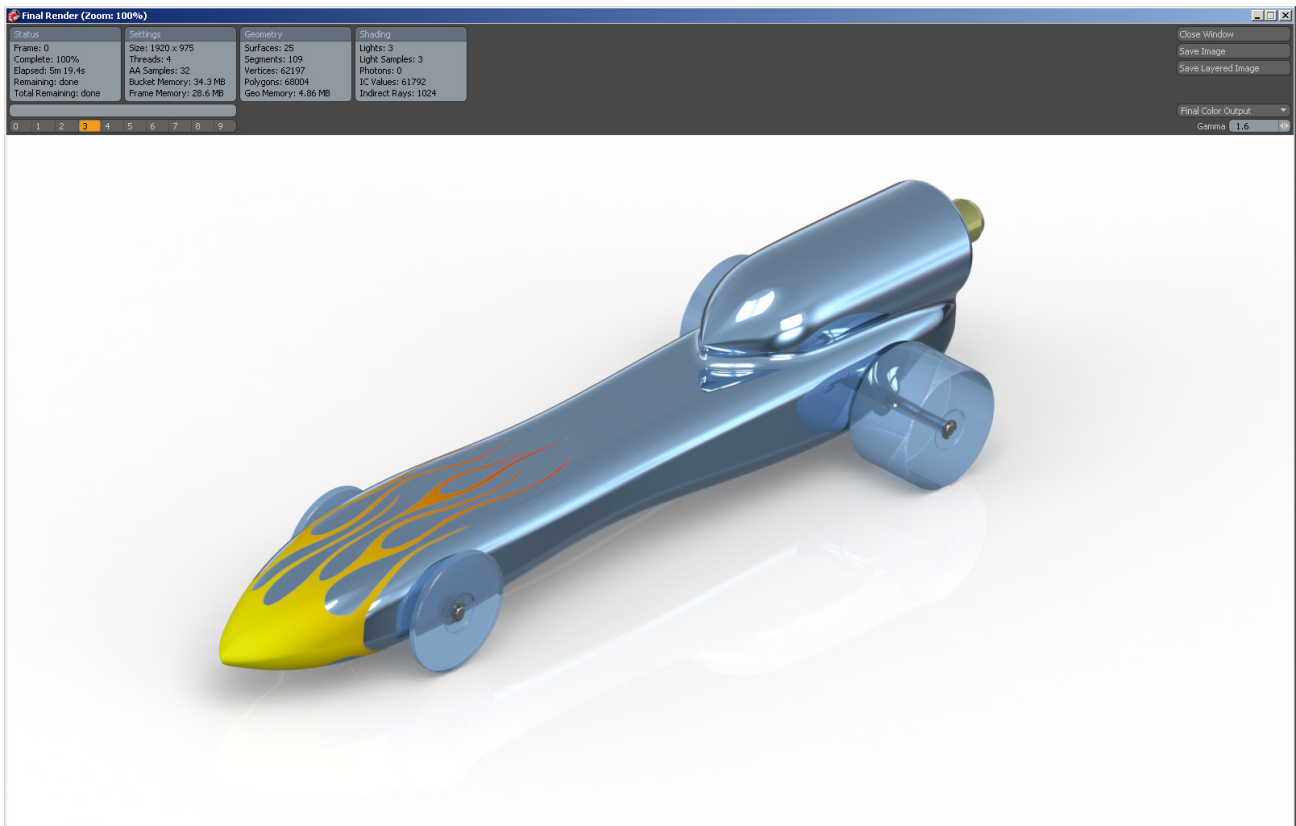


Fig. 10