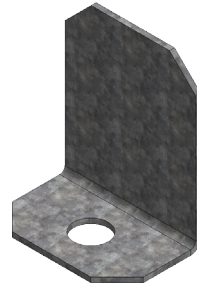




Sumo Car L-Bracket



A. Sheet Metal.

Step 1. Click File Menu > New, click **Part** and OK.

Step 2. Click **Right Plane**  in the Feature Manager and click **Sketch**  from the Content toolbar, **Fig. 1**.

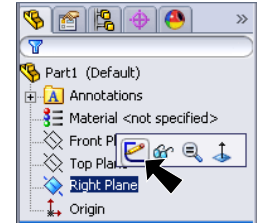


Fig. 1

Step 3. Click **Line**  (L) on the Sketch toolbar.

Step 4. Starting from the Origin  draw **two lines**, **Fig. 2**.



Fig. 2

Step 5. Click **Smart Dimension**  (S) on the Sketch toolbar.

Step 6. Dimension the lines as shown in **Fig. 3**.

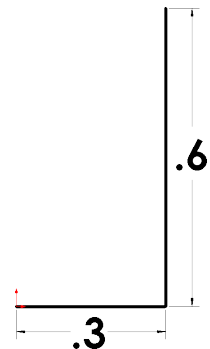




Fig. 3

Step 7. Click Insert Menu > Sheet Metal > Base Flange.

Step 8. In the Property Manager set:
under Direction 1

- Depth  **.5**, **Fig. 4**
- under Sheet Metal Gauges
- check **Use gauge table**
- select **Sample Table - Aluminum**
- under Sheet Metal Parameters
- select **Gauge 26**
- click OK , **Fig. 4**.

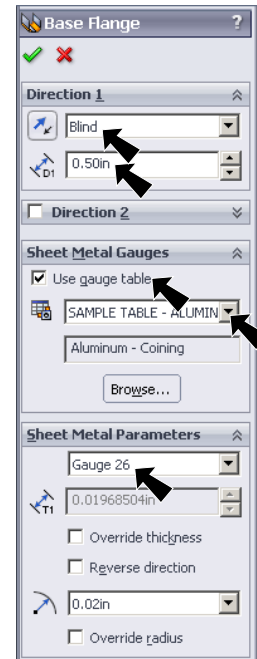


Fig. 4

B. Save as "L-BRACKET".

Step 1. Click File Menu > Save As.

Step 2. Key-in **L-BRACKET** for the filename and press ENTER.



Fig. 5

C. Hole.

Step 1. Click the **top face** and click **Sketch**  on the Content menu, **Fig. 6**.

Step 2. Click **Normal To**  on the Views toolbar (**Ctrl-8**).

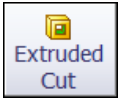
Step 3. Click **Circle**  (S) on the Sketch toolbar.

Step 4. Draw circle for hole, **Fig. 7**.


Step 5. Click **Smart Dimension**  (S) on the Sketch toolbar.

Step 6. Dimension as shown in **Fig. 7**.

Step 7. Click **Features**  on the Command Manager toolbar.

Step 8. Click **Extruded Cut**  on the Features toolbar.

Step 9. Click **Isometric**  on the View toolbar.

Step 10. In the Property Manager set:
under Direction 1, **Fig. 8**
End Condition **Through All**
click OK , **Fig. 9**.

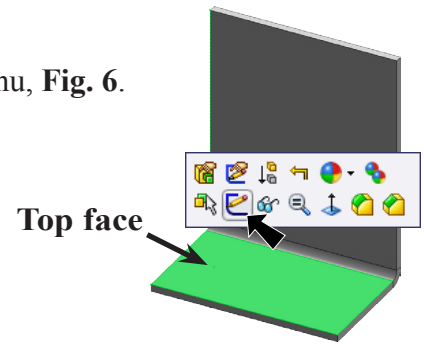


Fig. 6

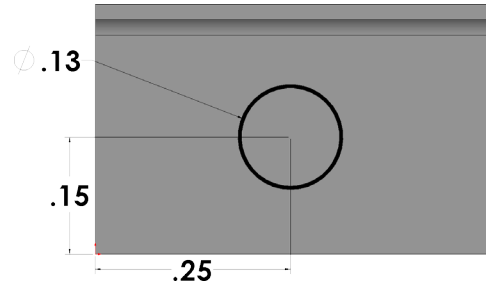


Fig. 7

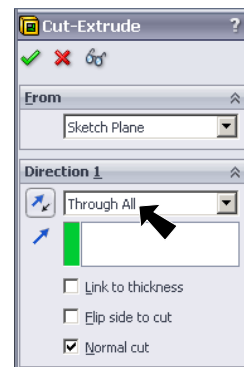


Fig. 8

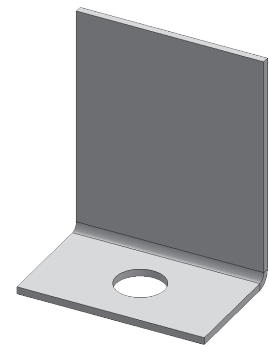


Fig. 9

D. Chamfers.

Step 1. Click **Chamfer**  in the **Fillet flyout**  on the Features toolbar.

Step 2. In the Chamfer Property Manager set:

Depth  **.1**, Fig. 10

Angle  **45°**

Drag a selection around each corner to select corner edge, Fig. 11.

click OK .

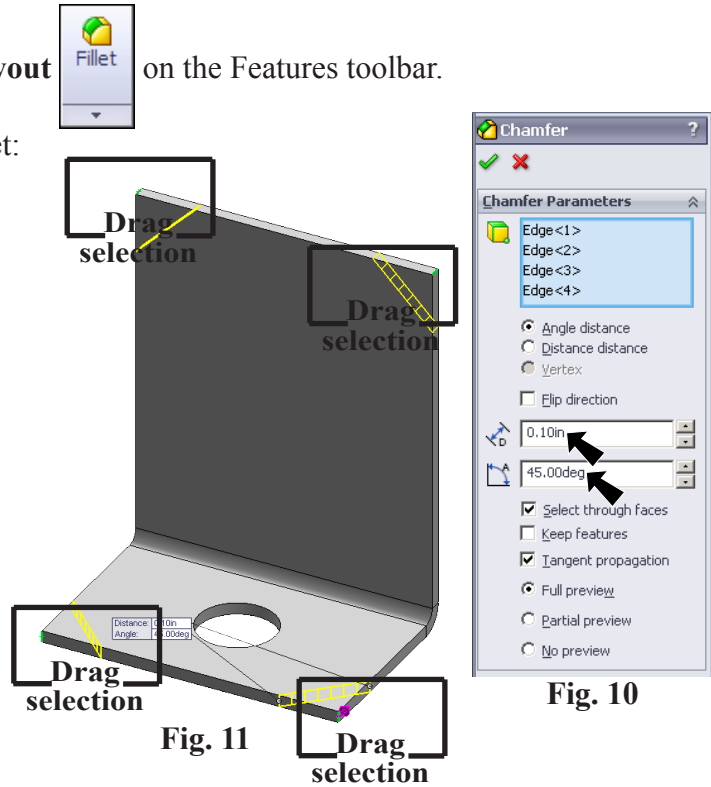


Fig. 10

E. Material Galvanized Steel.

Step 1. **Right click** **Material**  in the Feature Manager and click **Edit Material**.

Step 2. Expand **Steel** in the material tree and click **Galvanized Steel**. Click **Apply** and **Close**.

Step 3. Save. Use **Ctrl-S**.

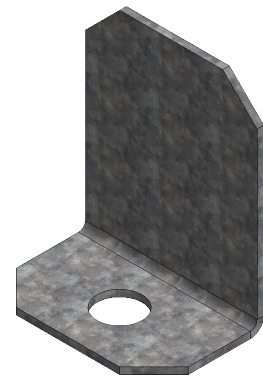


Fig. 12